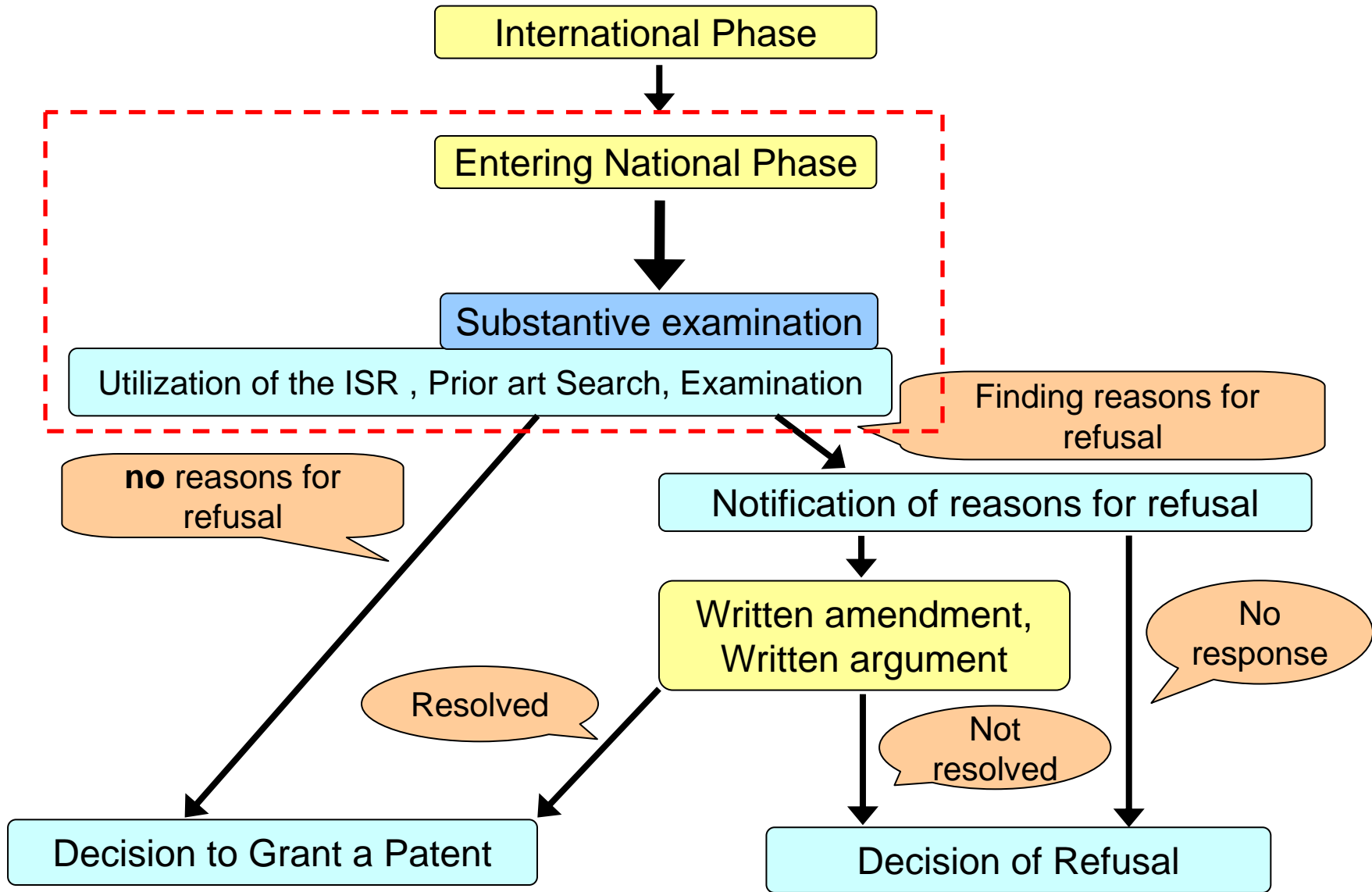

Utilization of the ISR in the PCT National/Regional Phase

Feb.2013

JAPAN PATENT OFFICE

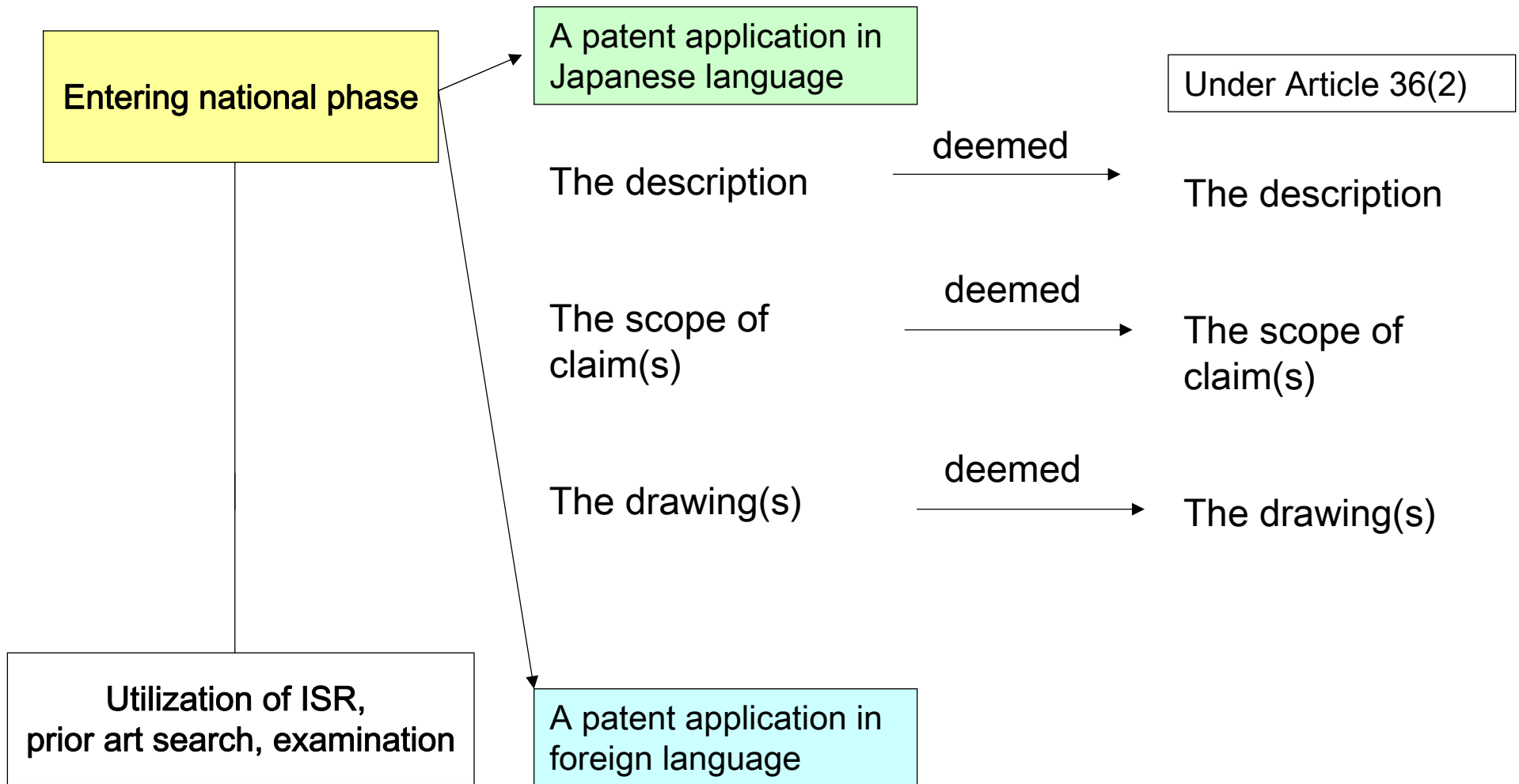
- Examination Flow (Outline)
- Entering National Phase
- Utilization of the ISR
- Prior Art Search
- Amendment

Examination Flow (Outline)

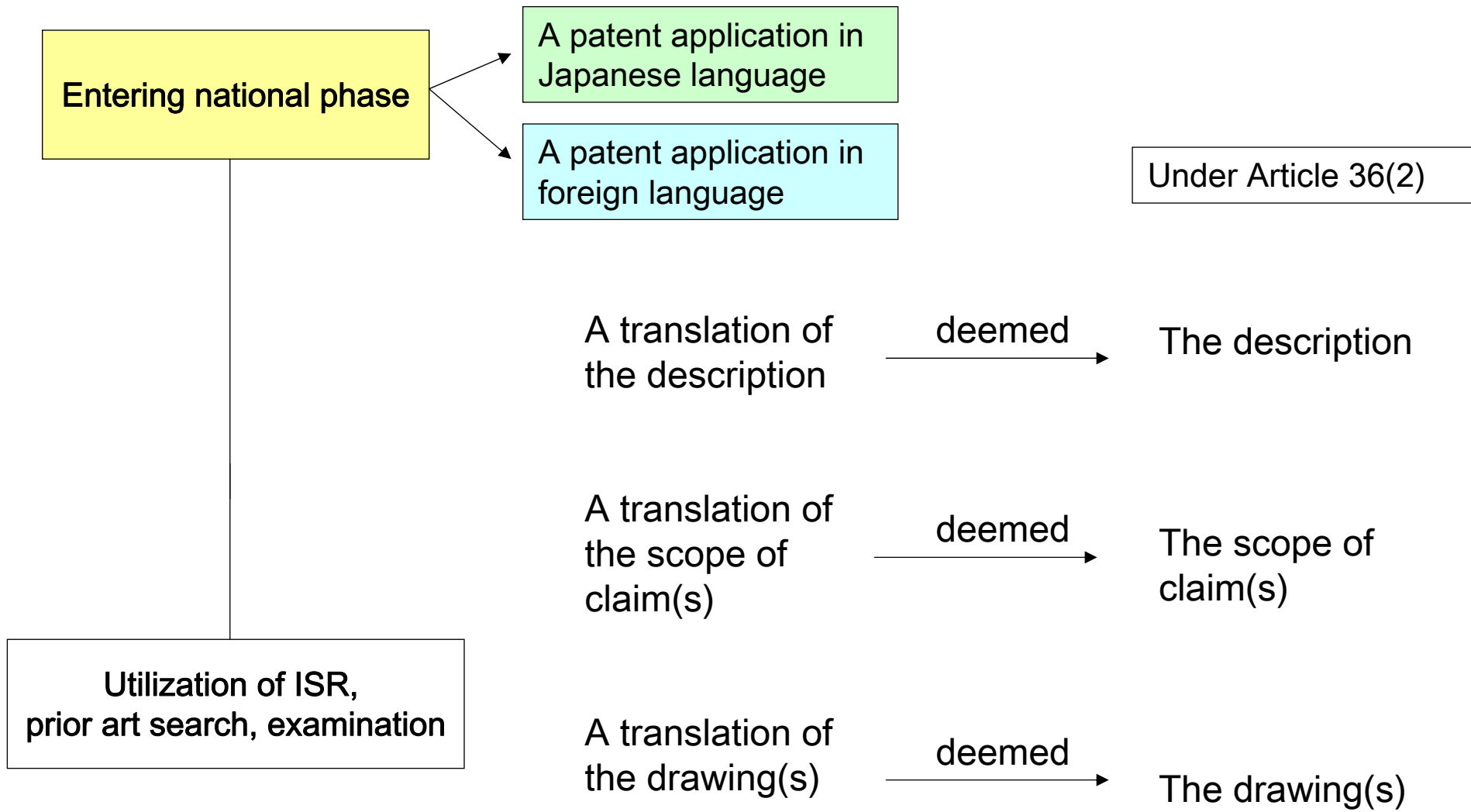


- Examination Flow (Outline)
- Entering National Phase
- Utilization of the ISR
- Prior Art Search
- Amendment

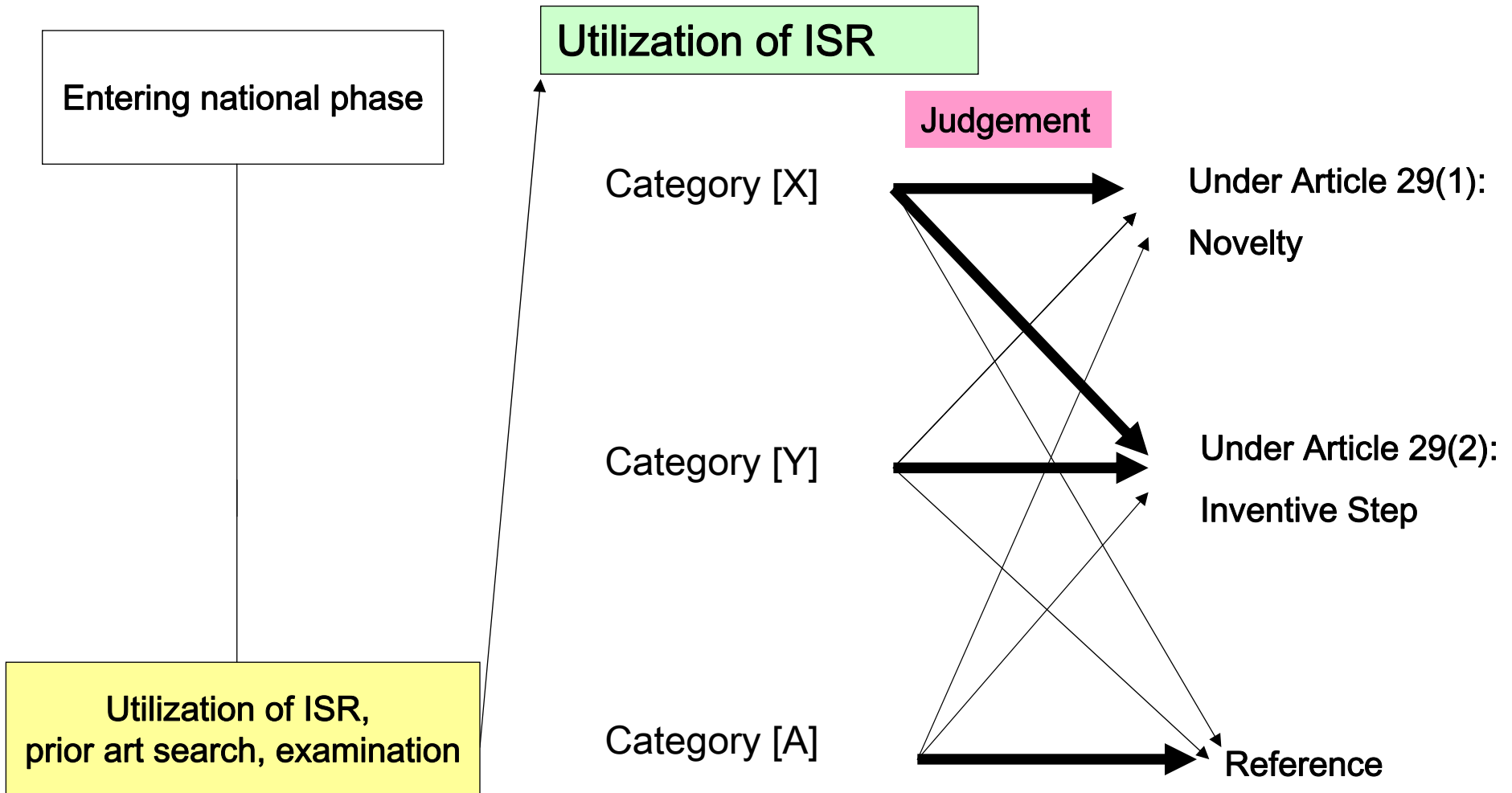
Entering national phase

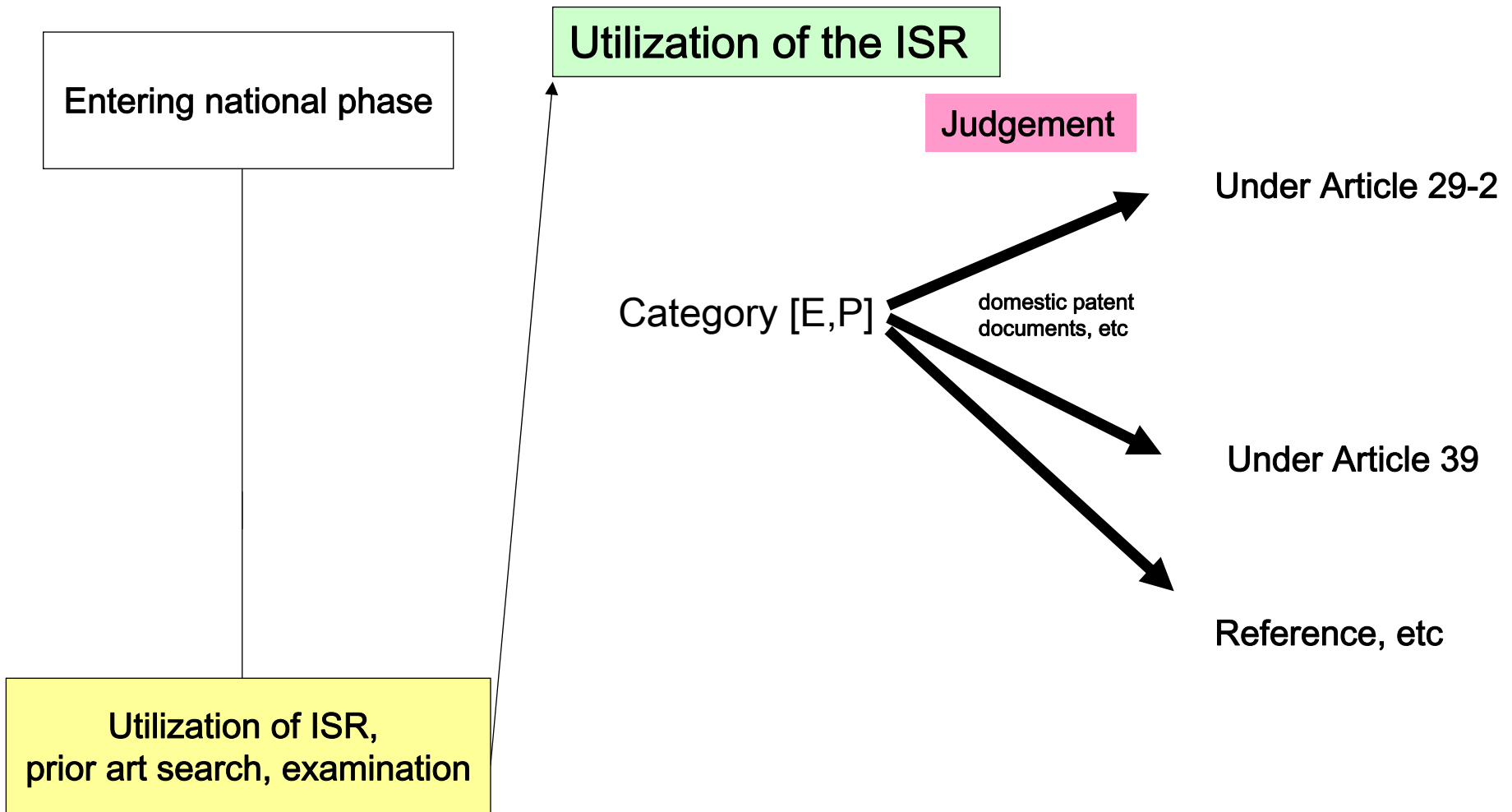


Entering national phase



- Examination Flow (Outline)
- Entering National Phase
- Utilization of the ISR
- Prior Art Search
- Amendment





- Examination Flow (Outline)
- Entering National Phase
- Utilization of the ISR
- **Prior Art Search**
- Amendment

Prior art search (1)

Examiners considers it possible, based on their knowledge and experience, to conduct an examination precisely and efficiently by using ISR.



The examiners are not required to carry out an additional prior art search .

Entering national phase

Utilization of ISR,
prior art search, examination

Prior art search (2)

Examiners consider it impossible, based on their knowledge and experience, to conduct an examination precisely and efficiently by using only ISR.



The examiners shall carry out an additional prior art search .

Entering national phase

Utilization of ISR,
prior art search, examination

Prior art search (3)

Examiners consider it possible, based on their knowledge and experience, to find relevant prior art documents more efficiently by carrying out a prior art search by themselves, rather than referring to an ISR.



The examiners may carry out an additional prior art search .

Entering national phase

Utilization of ISR,
prior art search, examination

Entering national phase

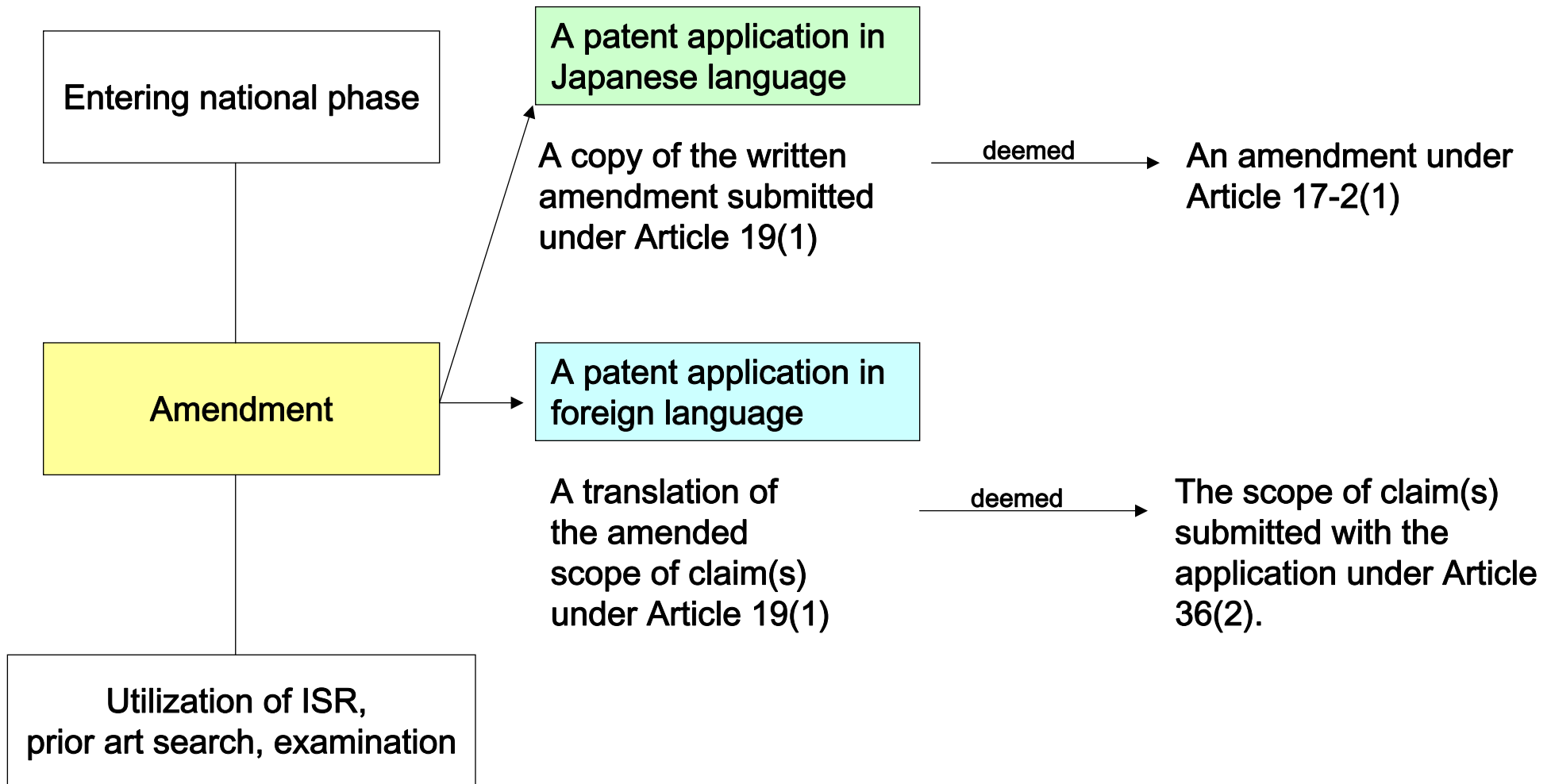
Prior art search (4)

- To search earlier filed but later published applications which were not searched by ISA
- To search in order to avoid duplicate patenting

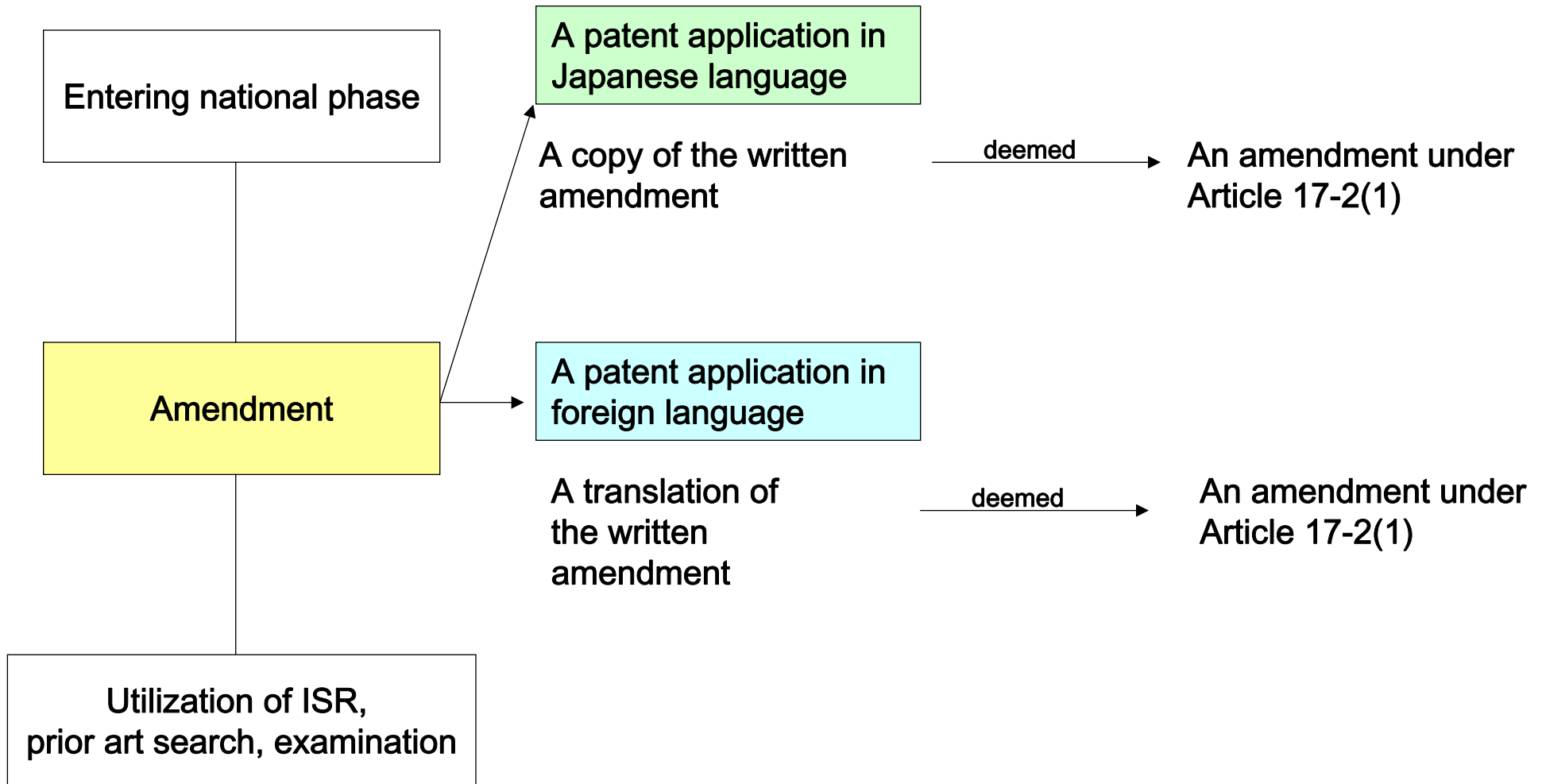
Utilization of ISR,
prior art search, examination

- Examination Flow (Outline)
- Entering National Phase
- Utilization of the ISR
- Prior Art Search
- **Amendment**

An amendment under Article 19(1) of the treaty

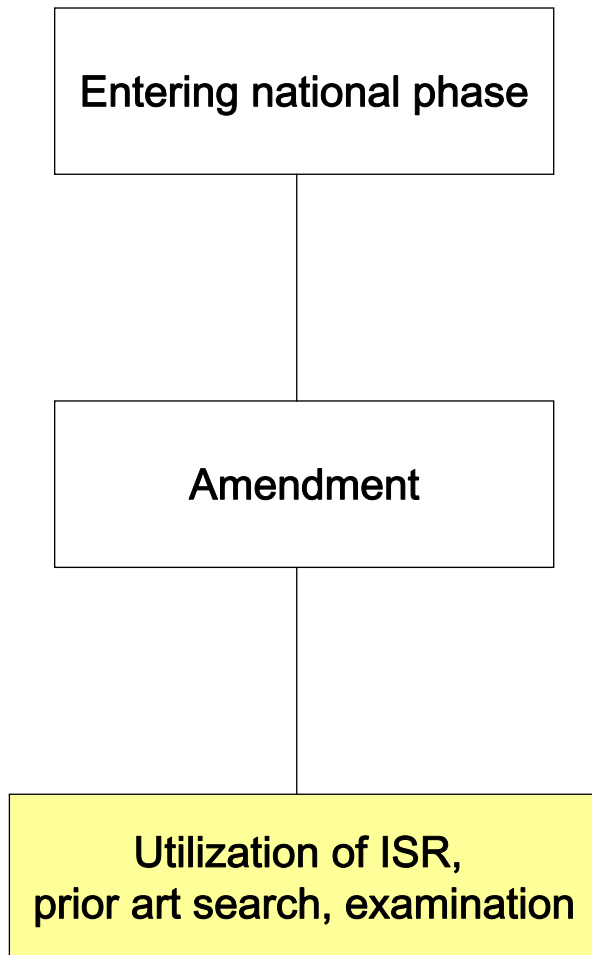


An amendment under Article 34(2)(b) of the Treaty



- Additional prior art search

If amendments add any features that necessitate additional prior art search.



Ex Claim: A+B
↓ Amendment
Claim: A+C

Thank you!