

COUNTRY REPORT

INTELLECTUAL PROPERTY OFFICE OF THE PHILIPPINES (IPOP HIL)

Engr. Raisa C. Lubina
Intellectual Property Rights Specialist II



INTELLECTUAL PROPERTY OFFICE
OF THE PHILIPPINES
REPUBLIC OF THE PHILIPPINES

ORGANIZATION



INTELLECTUAL PROPERTY OFFICE OF THE PHILIPPINES (IPOPHIL)

INTELLECTUAL PROPERTY CENTER #28
Upper Mckinley Rd. Mckinley Hill Town
Center, Fort Bonifacio, Taguig City 1634
Philippines

238-6300

www.ipophil.gov.ph

No. of employees: 256
(as of December 3, 2013)



INTELLECTUAL PROPERTY OFFICE
OF THE PHILIPPINES
REPUBLIC OF THE PHILIPPINES

NUMBER OF PERSONNEL

TECHNICAL PERSONNEL	#
Patent Examiners	54
Trademark Examiners	31
Lawyers	11
Information Officers	7
Patent Researchers	11
TOTAL	114*

TOTAL WORK FORCE	#
IPOPHIL Executive/Officials	14
Division Chiefs	15
Technical (Examiners, Lawyers, Patent Researchers & Information Officers)	114
Support to Technical	53
Administrative	73
Total	256*

**as of December 3, 2013*



INTELLECTUAL PROPERTY OFFICE
OF THE PHILIPPINES
REPUBLIC OF THE PHILIPPINES

IP FUNCTIONS AND SERVICES

- ❖ Examine applications for grant of letters patent for inventions and register utility models and industrial design
- ❖ Examine applications for the registration of marks, geographic indications (GI), and integrated circuits (IC)
- ❖ Register technology transfer arrangements and settle disputes involving technology transfer payments on Voluntary Licensing and develop and implement strategies to promote and facilitate technology transfer
- ❖ Promote the use of patent information as a tool for technology development
- ❖ Publish regularly in its publication the patents, marks, utility models and industrial designs, issued and approved, and the technology transfer arrangements registered



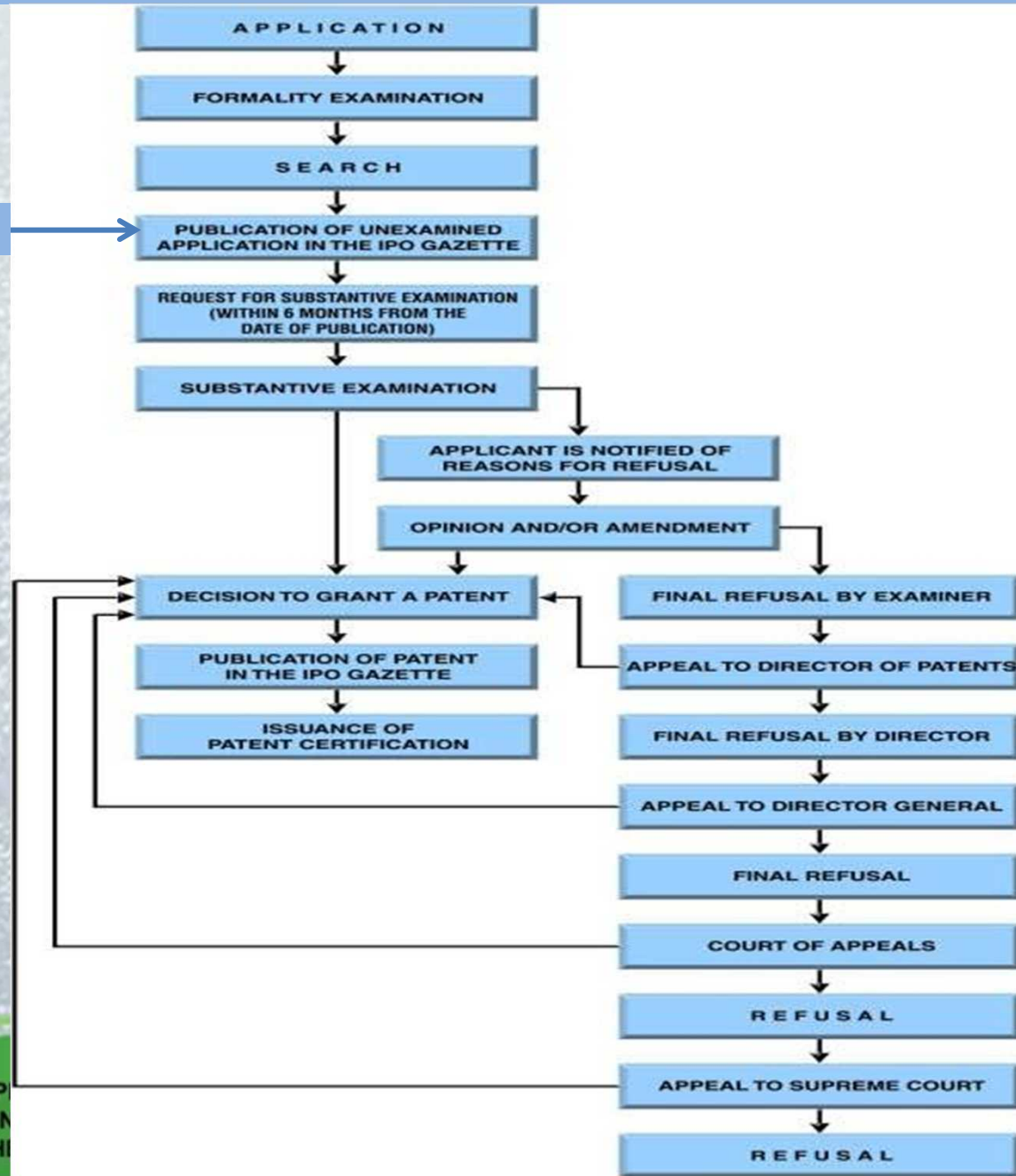
THE PHILIPPINE PATENT SYSTEM

HIGHLIGHTS	
Legal Basis	Republic Act No. 8293 Intellectual Property Code effective from 1 January, 1998 First-to-file System
Major international treaties signed	<ul style="list-style-type: none">• Patent Co-operation Treaty• Paris Convention• Budapest Treaty• Agreement on Trade Related Aspect of Intellectual Property Rights (TRIPS)• Madrid Protocol
Official language for patent prosecution	English or Filipino
Term of patent	20 years from date of filing



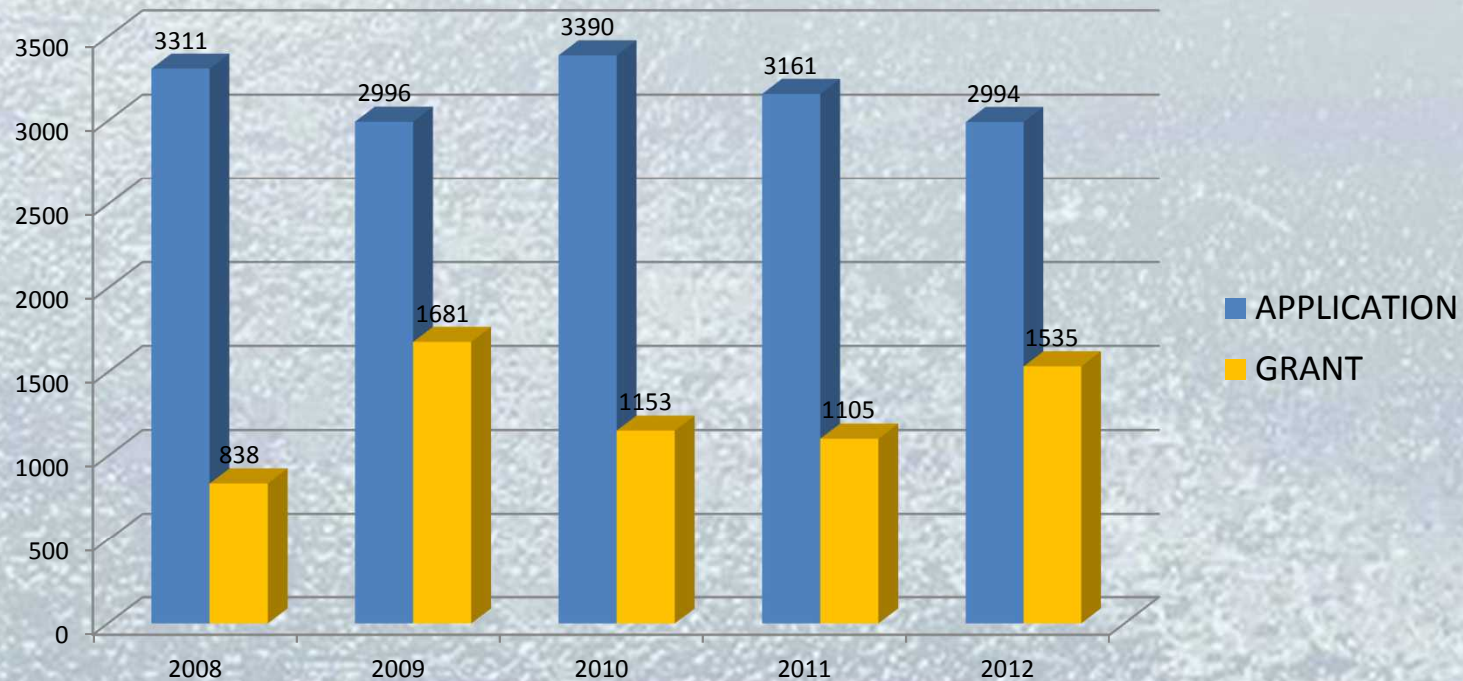
PATENT APPLICATION FLOWCHART

After 18 month period



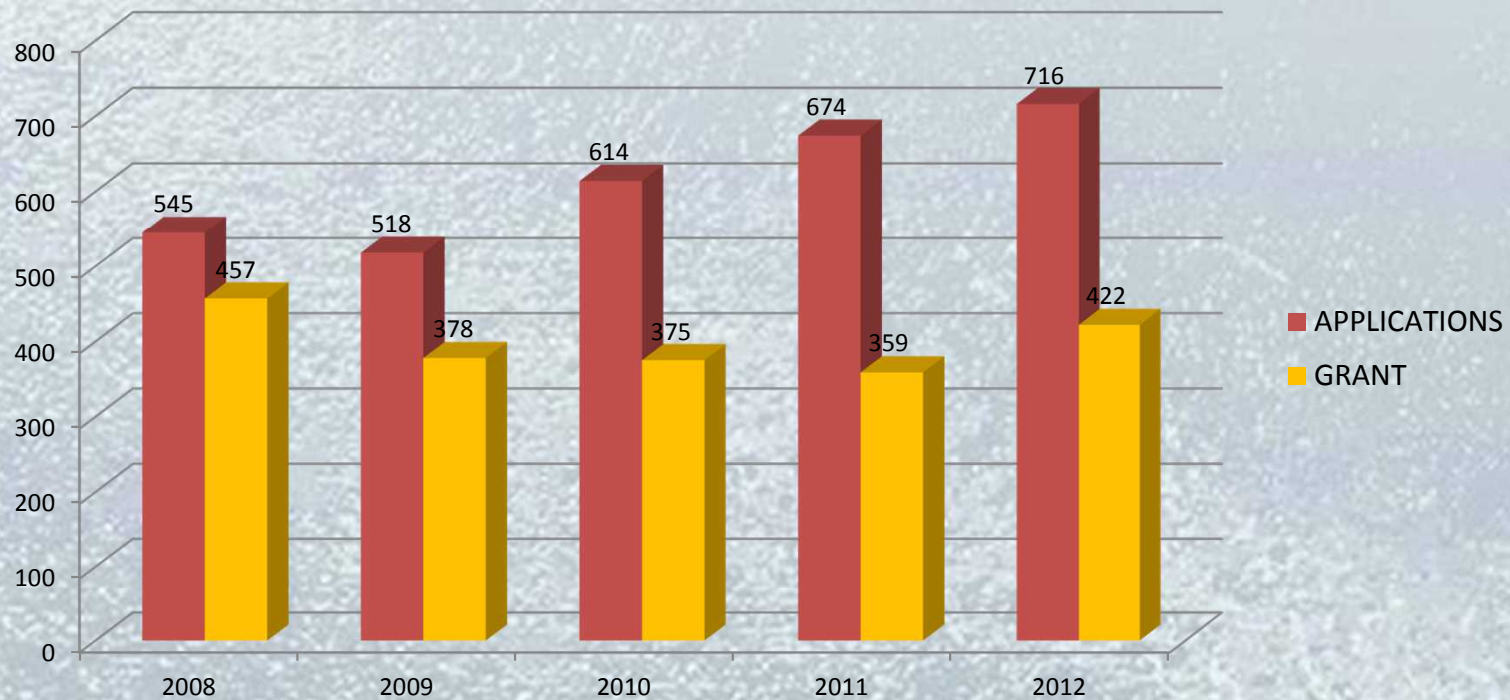
STATISTICS

INVENTION PATENT APPLICATIONS AND GRANT (2008-2012)



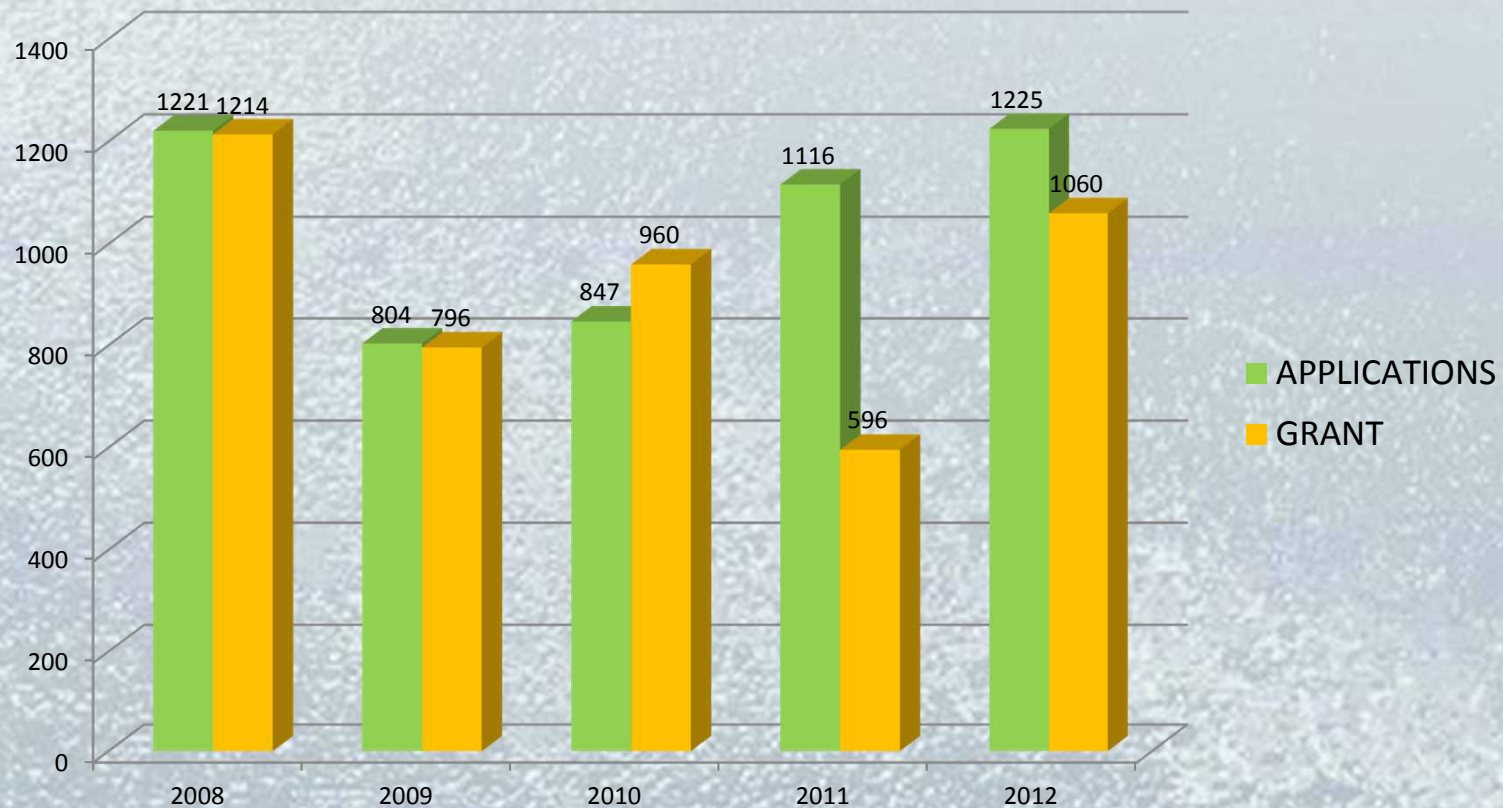
STATISTICS

UTILITY MODEL APPLICATIONS & REGISTRATIONS (2008-2012)



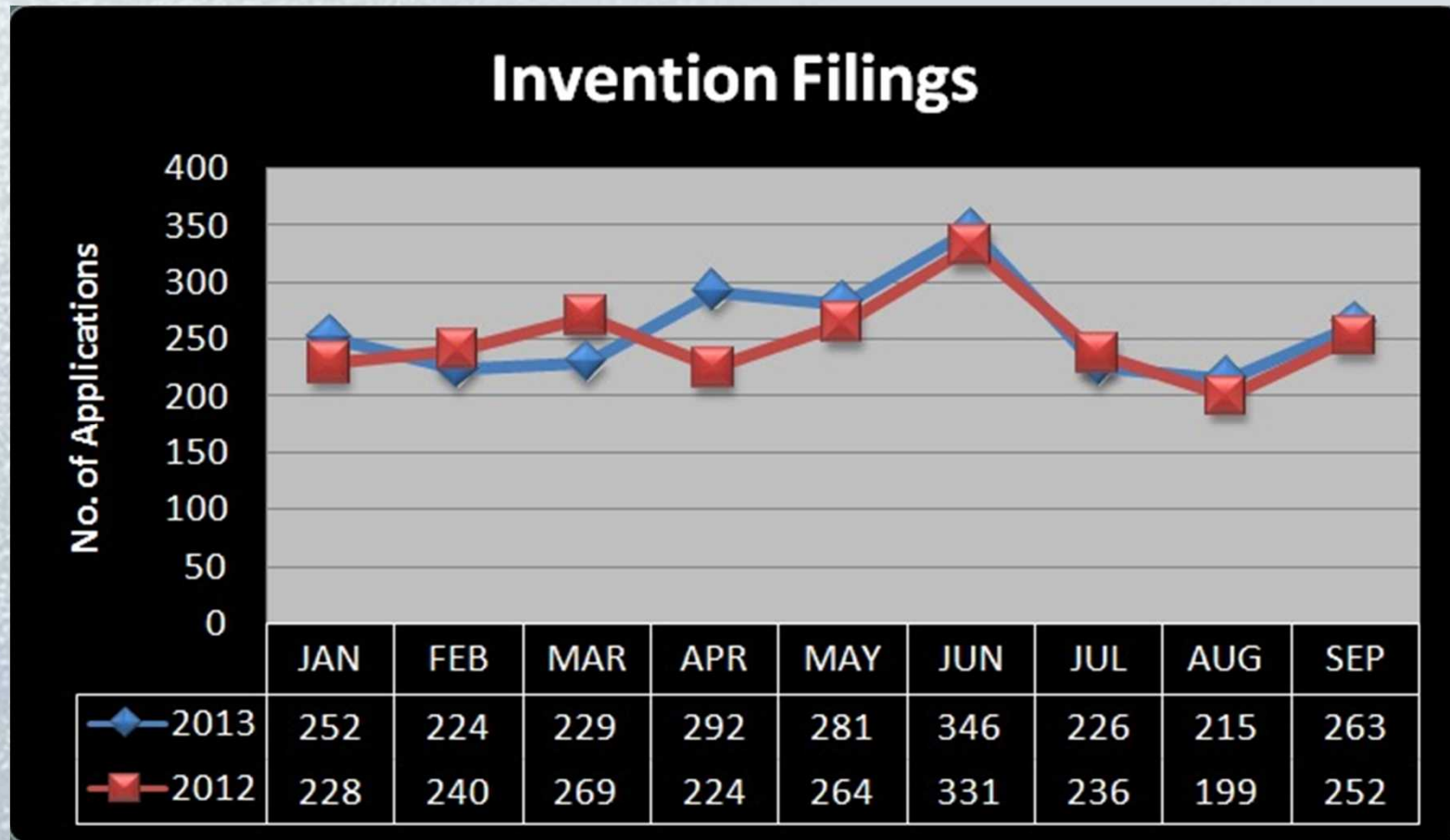
STATISTICS

INDUSTRIAL DESIGN FILINGS & REGISTRATIONS (2008-2012)



INTELLECTUAL PROPERTY OFFICE
OF THE PHILIPPINES
REPUBLIC OF THE PHILIPPINES

Invention Filings for 2013*



*as of September 2013



INTELLECTUAL PROPERTY OFFICE
OF THE PHILIPPINES
REPUBLIC OF THE PHILIPPINES

Invention Filings for 2013*

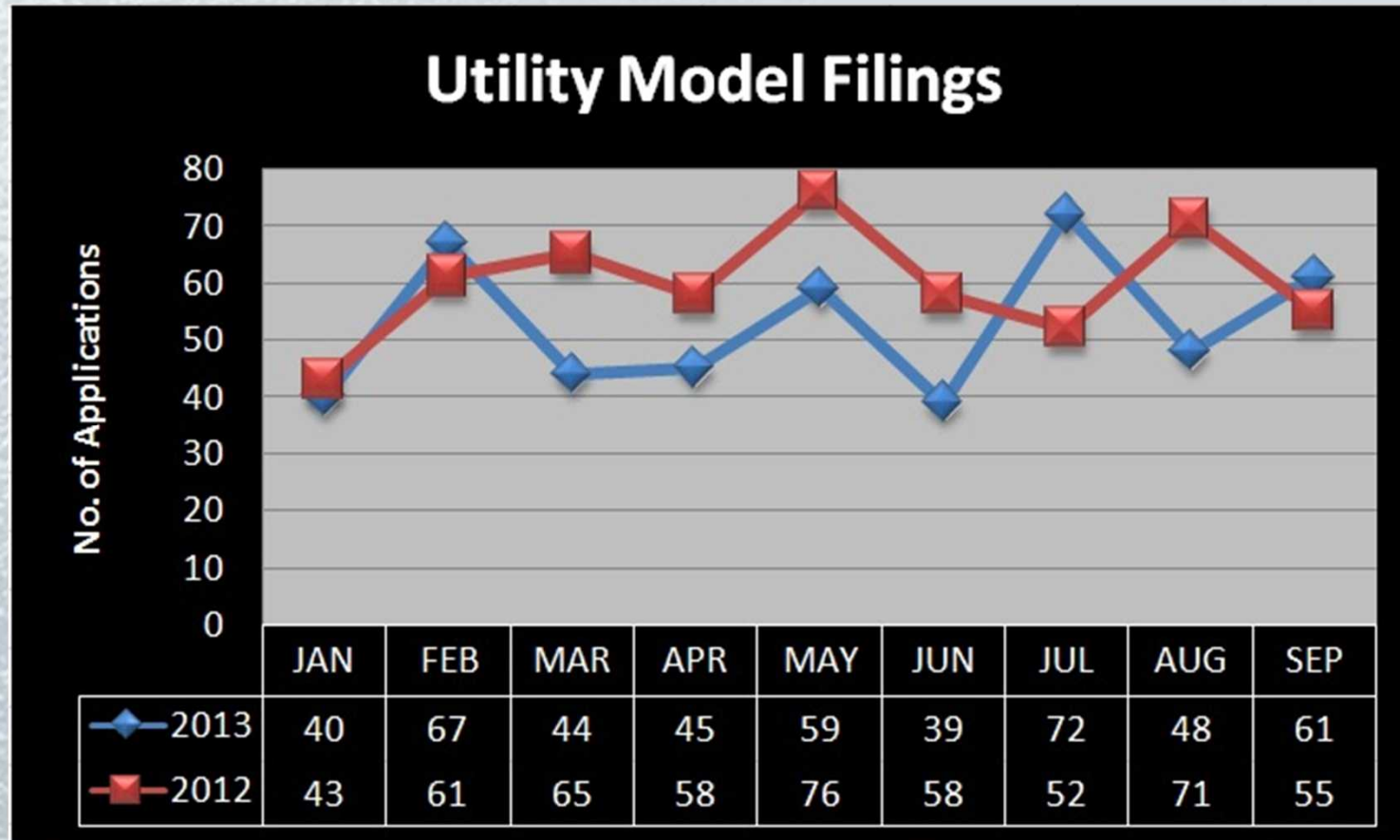
YEAR FILED	Direct Route		PCT	TOTAL
	L	F		
2013 (January – September)	141	160	2038	2339
2012 (January – September)	120	166	1950	2236
% Increase / (Decrease)	17.5%	(3.6%)	4.5%	4.6%

*as of September 2013



INTELLECTUAL PROPERTY OFFICE
OF THE PHILIPPINES
REPUBLIC OF THE PHILIPPINES

Utility Model Filings for 2013*



*as of September 2013



INTELLECTUAL PROPERTY OFFICE
OF THE PHILIPPINES
REPUBLIC OF THE PHILIPPINES

Utility Model Filings for 2013*

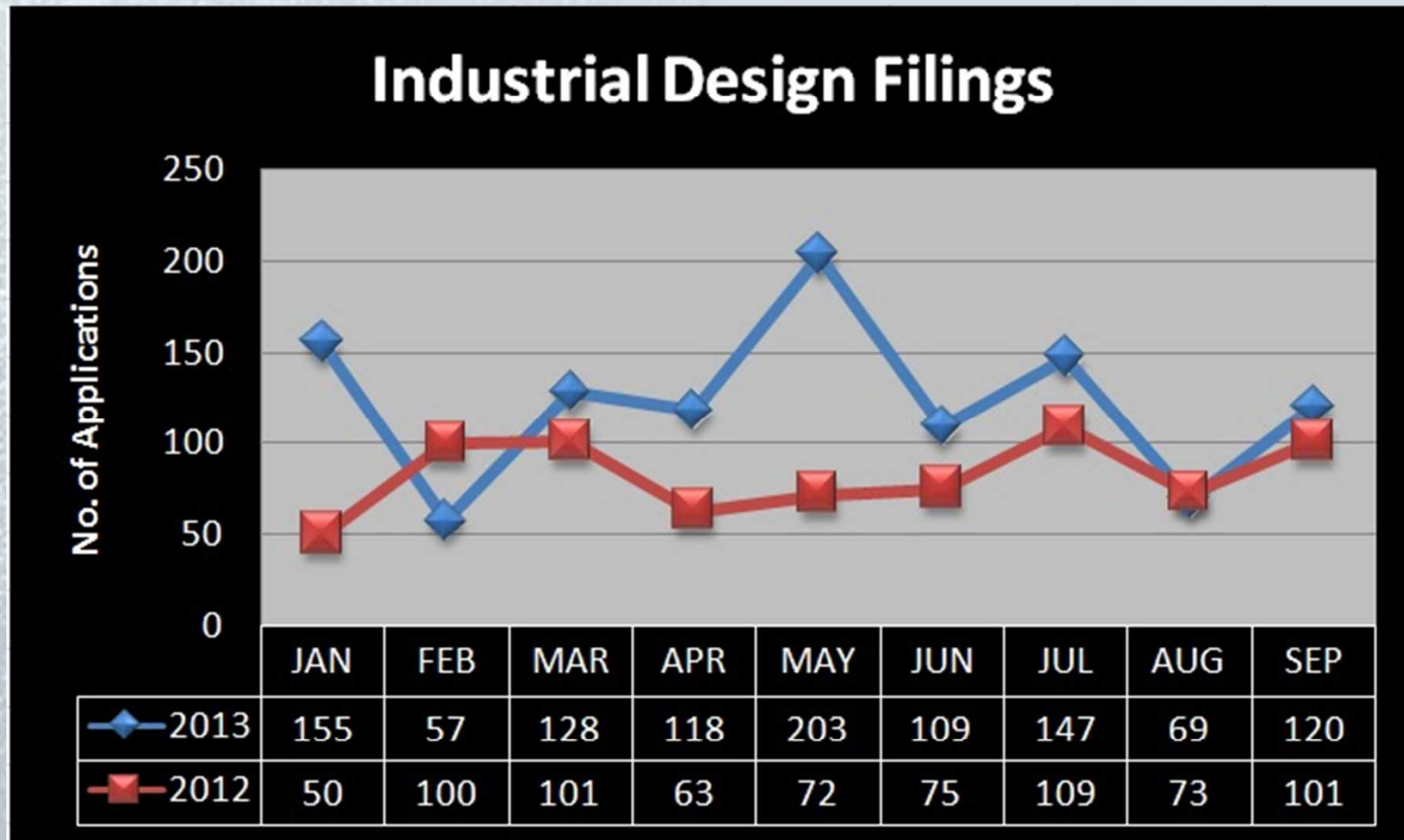
YEAR FILED	LOCAL	FOREIGN	TOTAL
2013 (January – September)	459	16	475
2012 (January – September)	529	20	549
% Increase / (Decrease)	(13.2%)	(20%)	(13.48%)

*as of September 2013



INTELLECTUAL PROPERTY OFFICE
OF THE PHILIPPINES
REPUBLIC OF THE PHILIPPINES

Industrial Design Filings for 2013*



*as of September 2013



INTELLECTUAL PROPERTY OFFICE
OF THE PHILIPPINES
REPUBLIC OF THE PHILIPPINES

Industrial Design Filings for 2013*

YEAR FILED	LOCAL	FOREIGN	TOTAL
2013 (January – September)	704	402	1106
2012 (January – September)	388	356	744
% Increase / (Decrease)	81.4%	12.9%	48.7%

*as of September 2013



INTELLECTUAL PROPERTY OFFICE
OF THE PHILIPPINES
REPUBLIC OF THE PHILIPPINES

How Patent Examiners Allocate Patent Classifications to Patent Applications

Direct Route Applications

- IPCs are allocated to applications before the search of prior art
- IPCs can also be allocated to applications upon issuance of Notice of Allowance



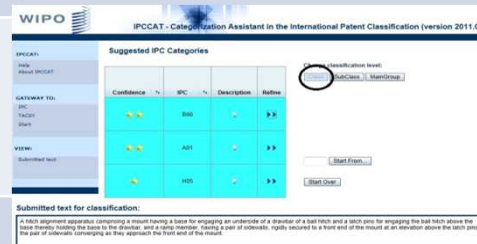
Patent Search Database/System

1) WIPO International Patent classification (IPC) System

☐ <http://web2.wipo.int/ipcpub/#refresh=page>

● IPC categorization (IPCCAT) tool

- (<http://www.wipo.int/ipccat/>)
- Available in the WIPO Website



● natural language classification tool

- (<http://www.wipo.int/tacsy/>)
- no longer available



Patent Search Database/System

2) Espacenet

- European Classification (ECLA) system
- CPC (Cooperative Patent Classification)

3) Japanese F-term Classification System



Use of Patent Classification During Search

- Patent Classification is an effective search tool for the retrieval of patent documents since it represents the subject matter of the invention in the specific state-of-the-art in the given fields of technology
- It is also a powerful tool for searching patent information because we are able to carry out a precise search by modifying the term based-search in patent database using patent classifications



Challenges

- **IPC allocation for traditional knowledge**
- IPC allocation for herbal medicines
- IPC allocation for hybrid technologies



Salamat po!
Thank you!

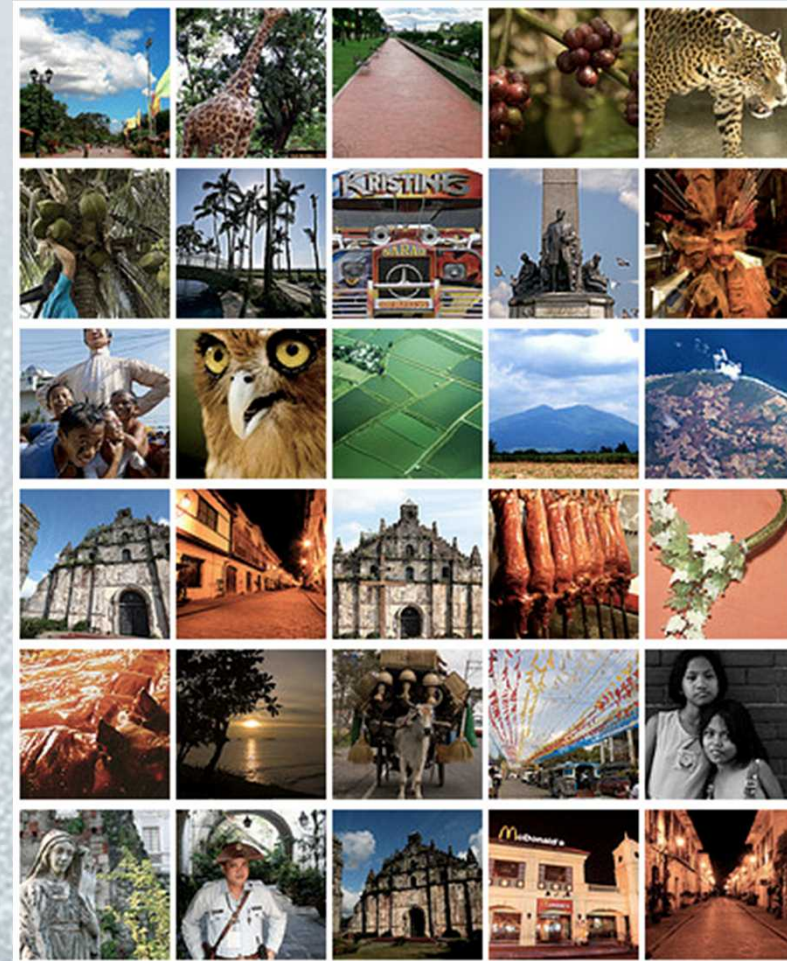


Photo by ourphotoworks



INTELLECTUAL PROPERTY OFFICE
OF THE PHILIPPINES
REPUBLIC OF THE PHILIPPINES