

Topic 5-4



WIPO Regional Seminar  
Effective Utilization of Patent Classification Systems

**COUNTRY REPORT  
UTILIZATION OF PATENT  
CLASSIFICATION SYSTEMS**

**BENNY SETIAWAN**  
Head Of Section Searching Patent  
Directorate General of IPR,  
Ministry of Law and Human Rights, Republic of Indonesia



# Indonesia



# ABOUT DGIPR AND IP ADMINISTERED

More than 570 employees, include over 150 examiners (patent, trademark, industrial design) and 60 civil investigators.





## Vision:

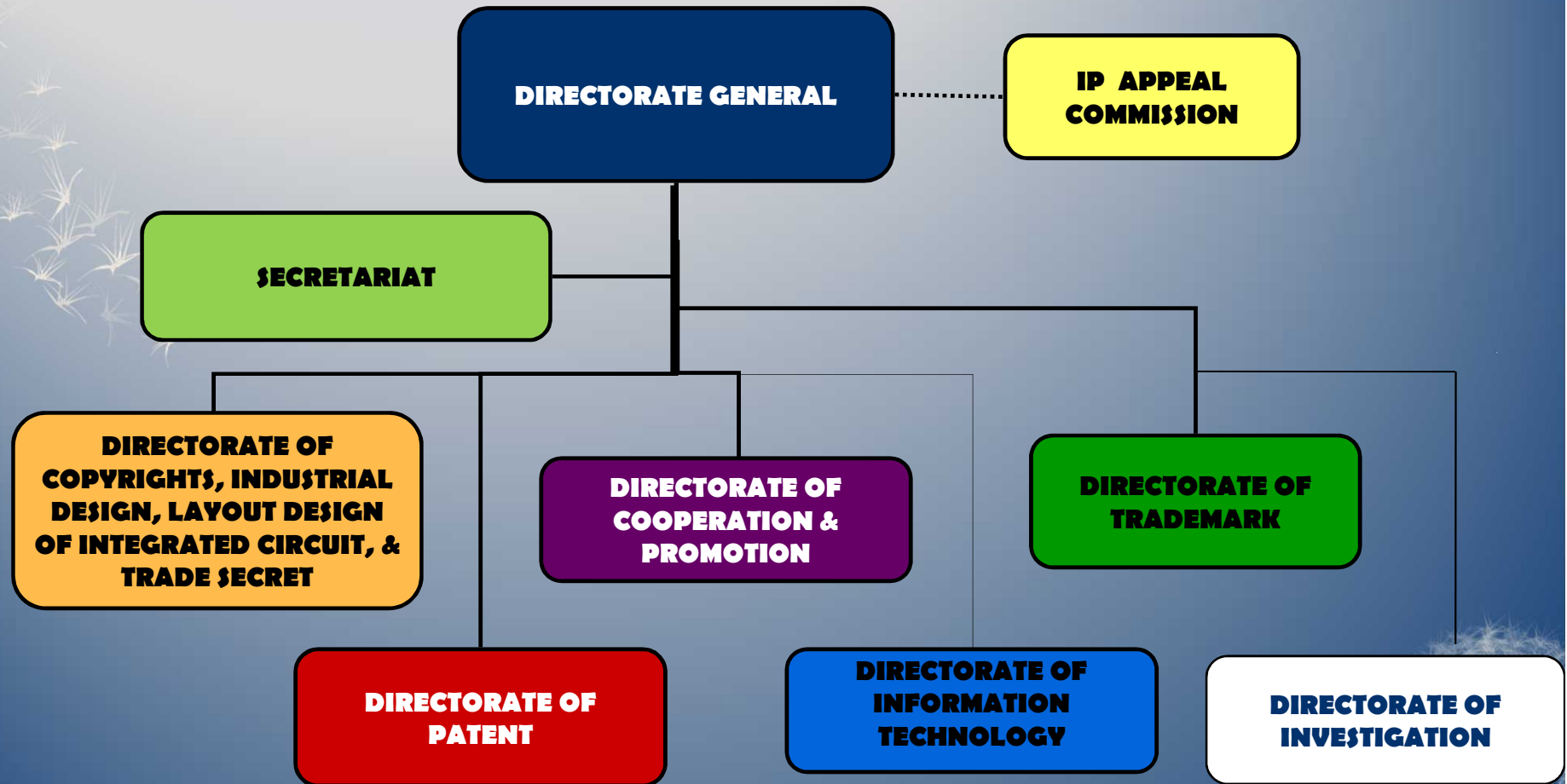
being institution IP international standard

## Mission:

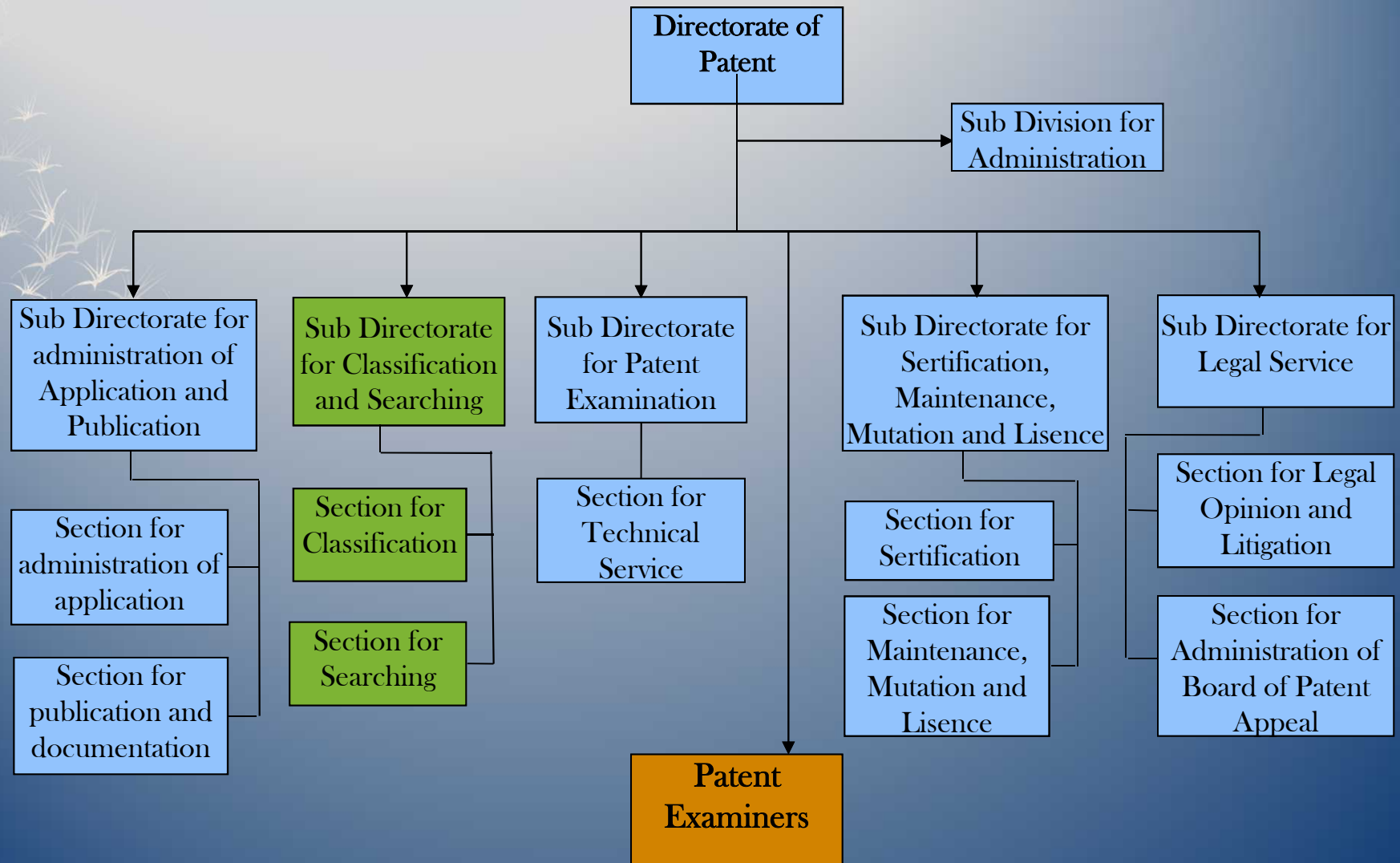
- to serving with excellence, providing services that are reliable, efficient and effective;
- to ensure the certainty of legal protection; and
- to encourage an innovative and inventive culture.

# Organizational Structure

BASED ON THE Regulation No. M.AH-05 OT.01, 30 December 2010



# Organization Structure Directorate of Patent



# DUTIES AND FUNCTIONS

## Directorate of Patent

### DUTIES

Carry out the preparation of formulating and the implementation of policies, the granting guidance of technical training and evaluation in the field of patent in accordance with the policy of technical director general of IPR.

## FUNCTIONS

- to preparation of formularization draft policies in the field of patent;
- to carry out of coaching, guidance and service;
- to preparation of drafting the norms, standard, procedures and criteria;
- to carry out of affairs the application and publication;
- to carry out of classify the documents of patent application and searching;
- to carry out of administration the examination and service of technical in the field of patent;
- to carry out of service of law in the field of patent; and
- to manage of affairs the administration of Directorate of patent.



# Patent Classification



## Sub Directorate of Classification And Searching Patent

*( Established since 2011 )*

Divided into :



Classification  
Section

and

Search  
Section



# Classification Section

- ✿ have the task to classify the documents of patent application based on The International Patent Classification;
- ✿ to preparation administrative reports.

# FOCUS

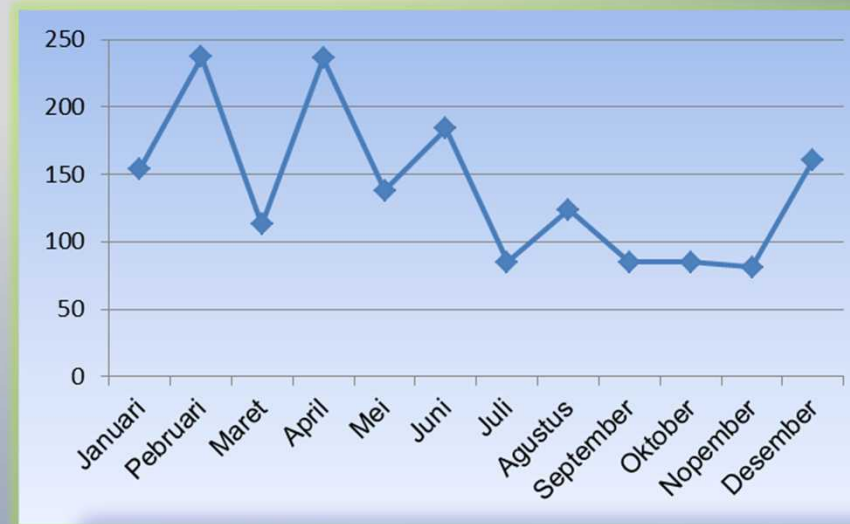
## Patent Document Classification

- ✱ classification of patent documents is focused on domestic patent documents (P) and simple patent documents (S)

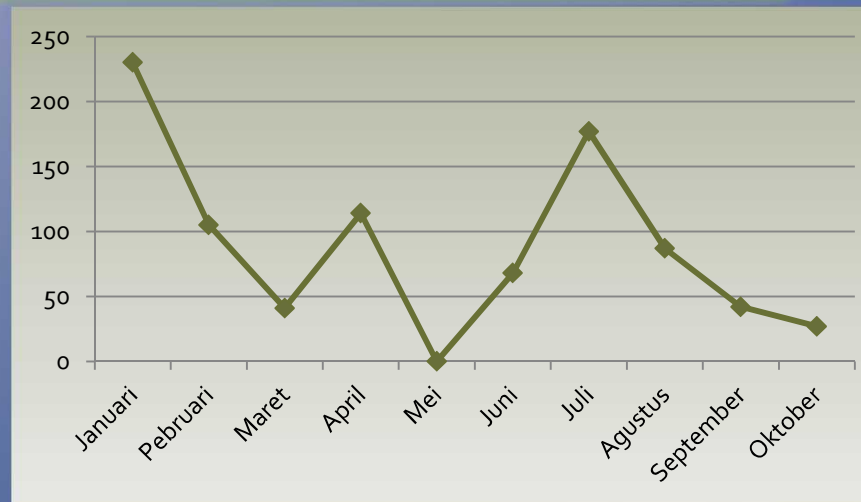
# Classification Document Number

Table

Month / year	2012	2013
January	154	230
February	237	105
March	113	41
April	236	114
May	138	0
June	184	68
July	85	177
Agustus	124	87
September	85	42
October	85	27
November	81	
December	161	
<b>Total</b>	<b>1683</b>	<b>891</b>



2012



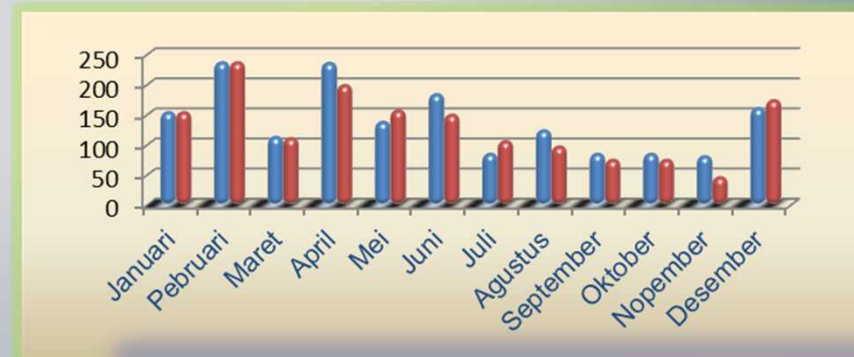
2013



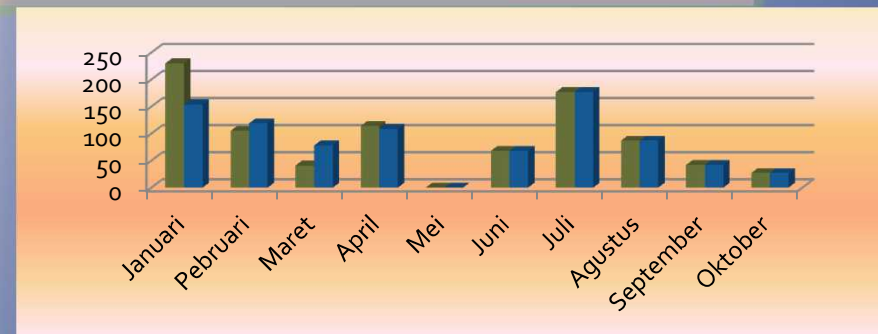
# Patent Document have been classified

Table

Month / year	2012		2013	
	distributed	done	distributed	done
January	154	154	230	154
February	237	237	105	119
March	113	111	41	78
April	236	199	114	109
May	138	157	0	0
June	184	150	68	68
July	85	106	177	177
Agustus	124	97	87	87
September	85	75	42	42
October	85	75	27	27
November	81	46		
December	161	174		
<b>Total</b>	<b>1683</b>	<b>1581</b>	<b>891</b>	<b>861</b>



2012



2013

## Note :

Data classification based on class is not available. So, with the new system (IPAS) is expected can be made patent document classification data reports are complete and accurate.

# Indonesia's Patent Classification

- Based on The latest version of International Patent Classification (IPC) from WIPO IP Services IPC Official Publication.



The screenshot displays the WIPO IP Services IPC Official Publication website. The main content area shows the IPC Scheme with the following sections:

Scheme	RCL	Compilation	Catchwords	Corrigendum
A		SECTION A — HUMAN NECESSITIES		
B		SECTION B — PERFORMING OPERATIONS; TRANSPORTING		
C		SECTION C — CHEMISTRY; METALLURGY		
D		SECTION D — TEXTILES; PAPER		
E		SECTION E — FIXED CONSTRUCTIONS		
F		SECTION F — MECHANICAL ENGINEERING; LIGHTING; HEATING; WEAPONS; BLASTING		
G		SECTION G — PHYSICS		
H		SECTION H — ELECTRICITY		

The left sidebar contains navigation and search options, including Version (2013.01), Current symbol, Go to, Language (English, French, English/French), View mode (path, full, hierarchic), Standardized sequence, Deleted entries, Subclass indexes, Guidance Headings, Notes, Search (Terms, Cross-references), Assistance (STATS, Text categorization (IPCCAT)), and Number of displayed entries (500).

## Note :

unfortunately, there are no parts or special division tasked to keep track of the latest IPC or as a delegate in the meeting that discussed the latest progress in international forums IPC.

# IPAS- Industrial Property Automation System

IPAS JAVA - Industrial Property Automation System Home | Logout

Back | Save all changes | Discard changes

---

**Edit Patent/Design**

PatentP 00 2012 00627 - HELM YANG DILENGKAPI DENGAN SARANA PENDINGIN

Filing Register Technical Exam PCT Drawings Claims Owners Reprs Inventors **IPCs** Priorities Ref docs Annuities Rel files Payments

New | Delete highlighted | Update highlighted | Add to IPC book

Qualif	Edition	Section	Class	Subclass	Group	Subgroup
A	8	A .	42	B	1	00
A	8	A .	42	B	3	00

**Details of highlighted IPC class**

IPC Edition:

IPC Section:

IPC Class:

IPC Subclass:

IPC Group:

IPC Subgroup:

IPC Qualification:

IPC Description:

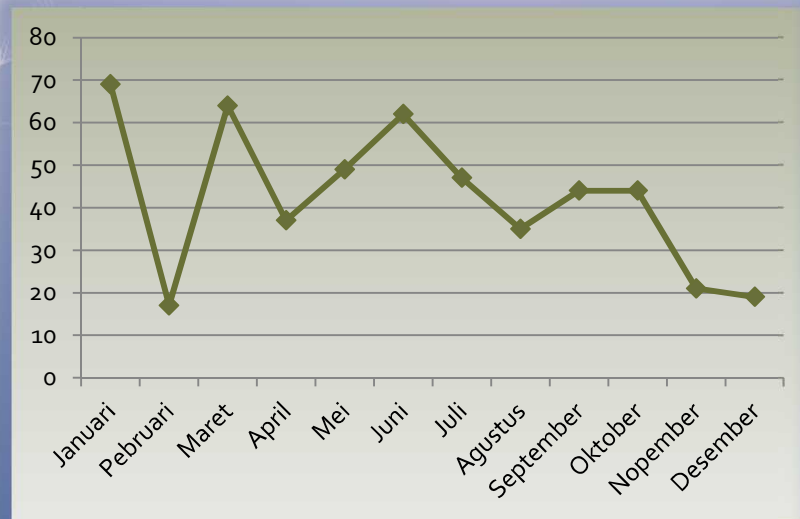
# Search Section

- ✿ assigned to conduct a search on DGIPR databases and other sources for the purpose of examination or for the benefit the applicant tracking;
- ✿ Preparation of administrative reports about search activity

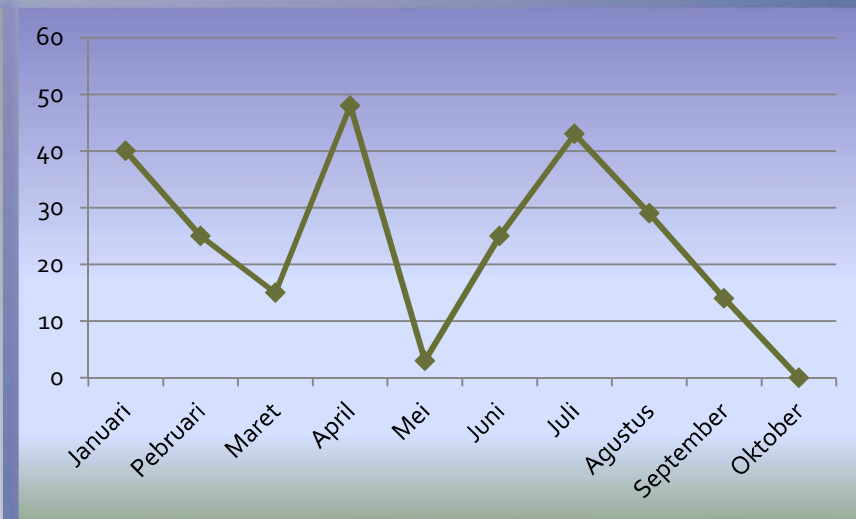


# Search Document Number

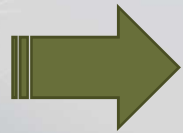
## 2012



## 2013



# The importance of patent classification



can help the process of patent search besides keywords

The screenshot shows the Espacenet Patent search interface. The top navigation bar includes the Espacenet logo, language options (Deutsch, English, Français), and a 'Change country' dropdown. Below the navigation bar, there are tabs for 'Search', 'Result list', 'My patents list (0)', 'Query history', 'Settings', and 'Help'. The main content area is divided into 'Smart search' and 'Advanced search' sections. The 'Advanced search' section contains several input fields for search criteria, including 'Title', 'Title or abstract', 'Publication number', 'Application number', 'Priority number', 'Publication date', 'Applicant(s)', and 'Inventor(s)'. Handwritten blue annotations highlight the 'Title or abstract' field with the text 'key words' and the 'IPC' field with the text 'IPC'. The 'IPC' field contains the code 'H03M1/12'. The bottom of the page includes a footer with 'Site map', 'Accessibility', 'Legal notice', 'Terms of use', and 'Last updated: 09.10.2013 Worldwide Database 5.8.11.5, 92p'.

# IP STATISTICS

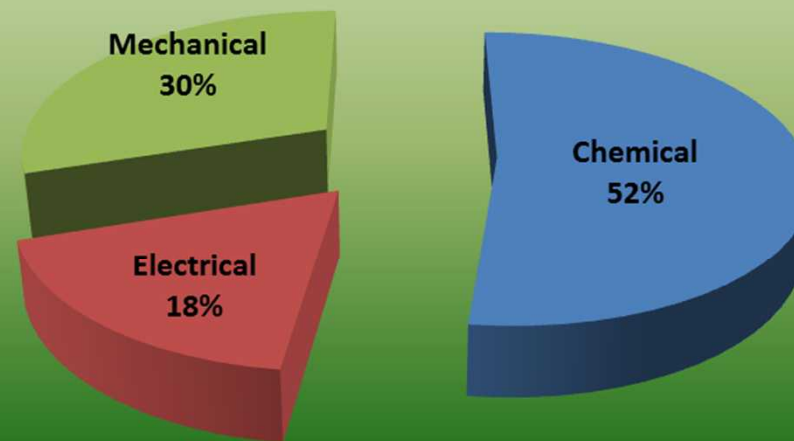
## APPLICATIONS FOR PATENT

YEAR	PATENT				SIMPLE PATENT		TOTAL
	DOMESTIC	DOMESTIC PCT	FOREIGN	FOREIGN PCT	DOMESTIC	FOREIGN	
2011	533	8	458	4,839	236	56	6,130
2012	601	10	680	5,471	219	51	7,032
2013	275	2	487	4,442	155	64	5,425



# RECENT TREND OF PATENT APPLICATIONS

Number of documents which have classified



Substantive examination shall be conducted by Patent Examiners. There are 77 Patent Examiner in examination division.

In Examination division consist of three division, including:

- Examination division I (electrical field, 19 examiner);
- Examination division II (mechanical field, 23 examiner);
- Examination Division III (chemical field, 35 examiner).

We have the task to classify the documents of patent application to IPC class:

Examination division I (electrical /physics field):

Unit 1: G02B, C, F; A61B (except 3/00-3/18); A61N; H03K, M; G11B 3/00-14/00; G03F; F02P; F03H; H01B (except 1/00-3/56); H04B except (10/00-10/24); H05B (except 33/12, 32/28); H01K; H01L 35/49; G01S; H01P, Q; H04J, L.

Unit 2: H04N; H01R, K, L (except H01L 35-49); G11B 15/00-19/00; G03B, D, H; B60L; H01M (except 10/42-10/61); F23N, H05B 3100-43/00; G12; H01J 1/00-9/00.

Unit 3: G08; G10; G11B 20/00-33/00; H03 (except K, M) G11C; G01 (except V, R) G03G 13/00-21/00; G04; G21; G09G H04H, K, M, O, S; E05B 49/00-49/04; H01G, C, S; H05C, H, K, G; G07; H02.

Unit 4: G08C, D, E; A61B 3/00-3/18; H01J (except 1/00-9/50), 29/10-29/34, 61/42-61/46, 63/04; G01V, R; H01F, G05D, G; G06F, G; H05H; H01T; B23K 9/06-9/10; B23Q 15/00-15/20; F23N; F41G.

## Examination division II (mechanical and general technology field):

Unit 1: A01B, C, G (except K 67/00-04, N); A21; A22; A23G; A23N; A23P, A24 (except B); A42; A43; A44; A45; A46; A47; A61C (except 2/00, 9/00); A61F; A61G; A61H; A61J; A61M; A63; A62B; A62C.

Unit 2: B02; B03B, C; B04; B07; B25; B62D; B66; B68; B08; B09; B22; B32; B41; B44; B60; B61; B62; B63; B64; B27; B28; B30; B31; B42; B43; B65; B67; B05; B21; B23; B24; B26; B29.

Unit 3: C03B; C21; C22; D06; C13C, H; C14D; D01B 3/00, 5/00; D01G 15/00-19/00; D02H; D01H 1/00-5/00; D04B 23/00, 25/00; D04B 5/00-13/00; D21F; D21G; E21B 35/00-49/00; E01; E02; E03; E04; E05 (except 49/00-49/04); E21 (except 35/00-49/00).

Unit 4: F01; F02; F16L; F16T; F22; F23; F24; F25; F26; F27 (except 13/00); F28; F16B, F, N, S; G09C, D, F; F16P; F03; F04; F15; F16D, G, H, J, K, N; F17; F21; F41; F42; G05G; G09B; H01H.

## Examination Division III (chemical, pharmacy, biology field):

Unit 1: C07; C08; G01N; C09F; C11B, C; D21 (except D21F, G).

Unit 2: C05B, C, D, F, G; A01N 25/00-51/00; C01; C02 (except C02F); C03; C04; C03B; G03C; B32B.

Unit 3: D01-D07 (except D01B 3/00, 5/00); D01G 15/00-19/00; D01H 1/00-5/00; D02H; D04B 5/00-13/00, 23/00-25/00; D04C 3/00, 5/00; D05B; C09 (except C09F); D21 (except D21F, D21G); C14C; B27K; C11D.

Unit 4: B01; C10; C21, 22; C02; C06; C04; C13 (except C, H); C23; B02; B03; B04; B05; B09; C25; H01M (except 10/42-10/52); B24D; B27B 13/00; B23C.

Unit 5: C07D+A61K; C07C+A61K; C07K+A61K; C07J+A61K; C07H+A61K.

Unit 6: A61K 6/00-9/72; A61K 31/00-49/00; A61K 51/00, 101/00, 103/00, 121/00, 123/00; A61N; G01N 33/00-33/99; (special case C12N+A61K).

Unit 7: A01K 61/00, 63/00, 65/00, 67/00; A01N 1/00, 3/00, 61/00-65/00; A01J, H; A21C, D; A23; A24B; A61C 2/00, 9/00; A61D, C02F, C07K; C12; C13D, F, G, J, K.



## Steps by patent examiner to carry out patent classifications to patent application

1. Find keywords expressing the essential concept of invention
2. Find synonyms of these keywords from:
  - technical dictionaries
  - documents already found in this technical field
  - patents classifications
3. Carry search to see first broad results indicating also more synonyms and classifications
4. Find useful patent classification symbols

4. Use keyword search to find the most relevant classification (compare different classifications if necessary as regards their relevance to your search)

- IPC TACSY: <http://www.wipo.int/tacsy/>

- Espacenet:

- [http://v3.espacenet.com/eclsrch?locale=en\\_EP/](http://v3.espacenet.com/eclsrch?locale=en_EP/)

6. Carry out search to find relevant classified documents

7. Combine the results of the classification search with additional features of the searched technology using keywords

# Using to database/system for search of patent classification

➤ PATENTSCOPE® search service




➤ esp@cenet



## Implementation of IPAS based Automation System

DGIPR has implemented several efforts in the automation IP administration for the past decade. It was started in 2007 with the establishment of digital database for easier and searching access. DGIPR continued its effort in fulfilling the needs to automate the process of IP administration. In a hope that the new system would enhance the administration of IP registration so that its faster, more accurate and more carefully, DGIPR decided to use Industrial Property Automation System (IPAS)-the system developed by WIPO.



As a concept IPAS is a flexible, modular system that can be customized to industrial property offices to automate their IP business and administrative processes from application reception to registration, including post-registration actions such as amendments, assignment, renewal, annuities, etc.

The development of IPAS is divided into three phases:

- Preparation
- Trial
- Production

After launching IPAS application in 2011, DGIPR started the trial phase by activating IPAS application for trademark registration in 2012. Now started the trial phase by activating IPAS application for patent, industrial design. The work flow process for filing application has been changed not only for trademark application but also for patent, industrial design, and copyright.

# Domestic Laws on IPR

- ⊙ **Law No. 30 of 2000 on Trade Secret.** Come into force in December 20, 2000;
- ⊙ **Law No. 31 of 2000 on Industrial Design.** Come into force in December 20, 2000;
- ⊙ **Law No. 32 of 2000 on Lay out Design and Integrated Circuit.** Come into force in December 20, 2000;
- ⊙ **Law No. 14 of 2001 on Patent. (Inc: Utility Models)** Come into force in August, 2000;
- ⊙ **Law No. 15 of 2001 on Trademark. (Inc: Geographical Indications)** Come into force in 1 Augusts 2001;
- ⊙ **Law No. 19 of 2002 on Copyrights. (Inc: Computer Programs, Optical Disc, Database, Etc)** Come into force in July 29, 2003;
- ⊙ **Law No 29 of 2000 on Plant Variety Protection.** (Administered by Ministry of Agriculture)



# IPR INTERNATIONAL CONVENTION

- ✱ Paris Convention for the Protection of Industrial Property (Stockholm Revision 1967) which is ratified by Presidential Decree No. 24 of 1979;
- ✱ Patent Cooperation Treaty (PCT) and Regulation under PCT which is ratified by Presidential Decree No.16 of 1997;
- ✱ Trademark Law Treaty (TLT), which is ratified by Presidential Decree No. 17 of 1997;
- ✱ Berne Convention for the Protection of Literary and Artistic Works, which is ratified by Presidential Decree No. 18 of 1997;
- ✱ WIPO Copyright Treaty, which is ratified by Presidential Decree No. 19 of 1997; and
- ✱ WIPO Performances and Phonograms Treaty (WPPT), which is ratified by Presidential Decree No. 74 of 2004.
- ✱ At present Indonesia is studying the possibility to join the Madrid Protocol on the International Registration of Trademark



## DEVELOPMENT IN THE FIELD OF LEGISLATION

- The stipulation of government regulations No 51/2007 regarding Geographical Indications;
- The stipulation of government regulations No 6/2007 regarding the Government Use of Patents of Retroviral Medicines;
- Indonesia is now revising four existing laws:
  - (1) Law No. 19/2002 on Copyrights,
  - (2) Law No. 14/2001 on Patents,
  - (3) Law No. 15/2001 on Trademarks
  - (4) Law No. 31/2000 on Industrial Design;
- Law on the Utilization and Protection of Intellectual Property of Traditional Cultural Expressions is being discussed prior to drafting;



THANK YOU

Directorate General of IPR  
Jl. Daan Mogot Km.24, Tangerang, Indonesia

[www.dgip.go.id](http://www.dgip.go.id)

