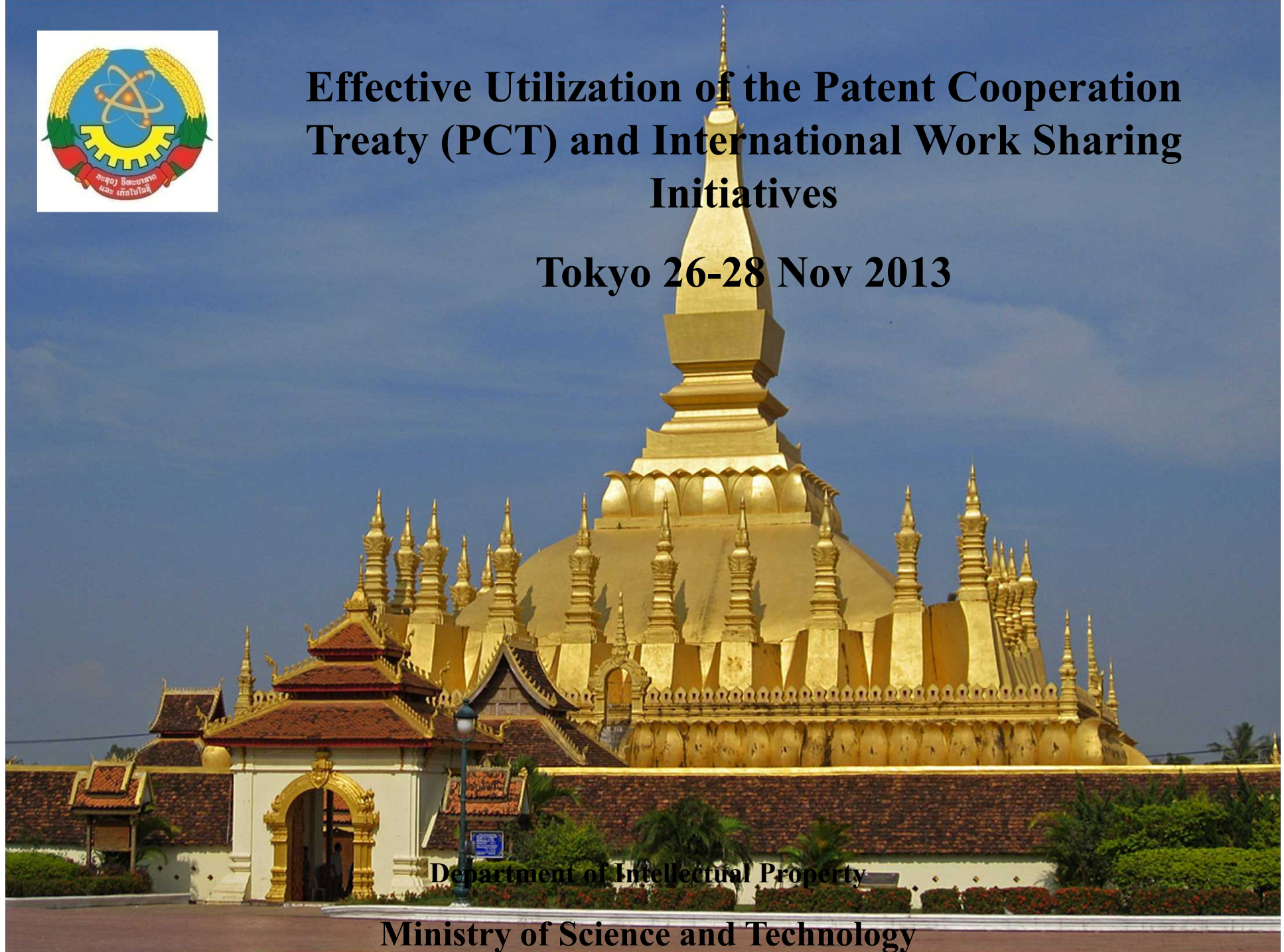




# Effective Utilization of the Patent Cooperation Treaty (PCT) and International Work Sharing Initiatives

Tokyo 26-28 Nov 2013



Department of Intellectual Property

Ministry of Science and Technology

# CONTENTS

---

- × Background
- × Patent Legislation
- × Statistic
- × Patent Granting Procedure
- × Challenges

# BACKGROUND

---

- ✘ Member of the World Intellectual Property Organization (WIPO) in 1995.
- ✘ Joined the Association of Southeast Asian Nations (ASEAN) and ASEAN Working Group on IP Cooperation (AWGIPC) in 1997.
- ✘ Joined Paris Convention for the Protection of Industrial Property in 1998.
- ✘ Joined Patent Cooperation Treaty (PCT) in 2006.
- ✘ The 158<sup>th</sup> member of the World Trade Organization (WTO) 2013.

# PATENT LEGISLATION

- ✘ Law on Intellectual Property No. 08/NA dated December 24<sup>th</sup>, 2007. Amended No. 01/NA dated December 20<sup>th</sup>, 2011. (Articles 13, 21, 26, 30, 31, 48, 55, 63)
- ✘ Regulation the Implementation of Patent and Petty Patent No. 0752/MOST dated September 20<sup>th</sup>, 2012.
- ✘ Regulation the Implementation of Trademarks and Trade Names No. 0753/MOST dated September 20<sup>th</sup>, 2012.
- ✘ Regulation the Implementation of Copyright and Related Rights No. 0754/MOST dated September 20<sup>th</sup>, 2012.
- ✘ Regulation the Implementation of Industrial Designs No. 0755/MOST dated September 20<sup>th</sup>, 2012.

# STATISTIC

2013 AS ON 22 NOV\*

| YEAR  | APPLICATIONS | REGISTERED |
|-------|--------------|------------|
| 2004  | 11           | 0          |
| 2005  | 7            | 0          |
| 2006  | 12           | 0          |
| 2007  | 23           | 0          |
| 2008  | 27           | 0          |
| 2009  | 18           | 0          |
| 2010  | 20           | 0          |
| 2011  | 43           | 0          |
| 2012  | 53           | 0          |
| 2013  | 77           | 0          |
| TOTAL | 291          | 0          |

# STATISTIC (CONTINUE)

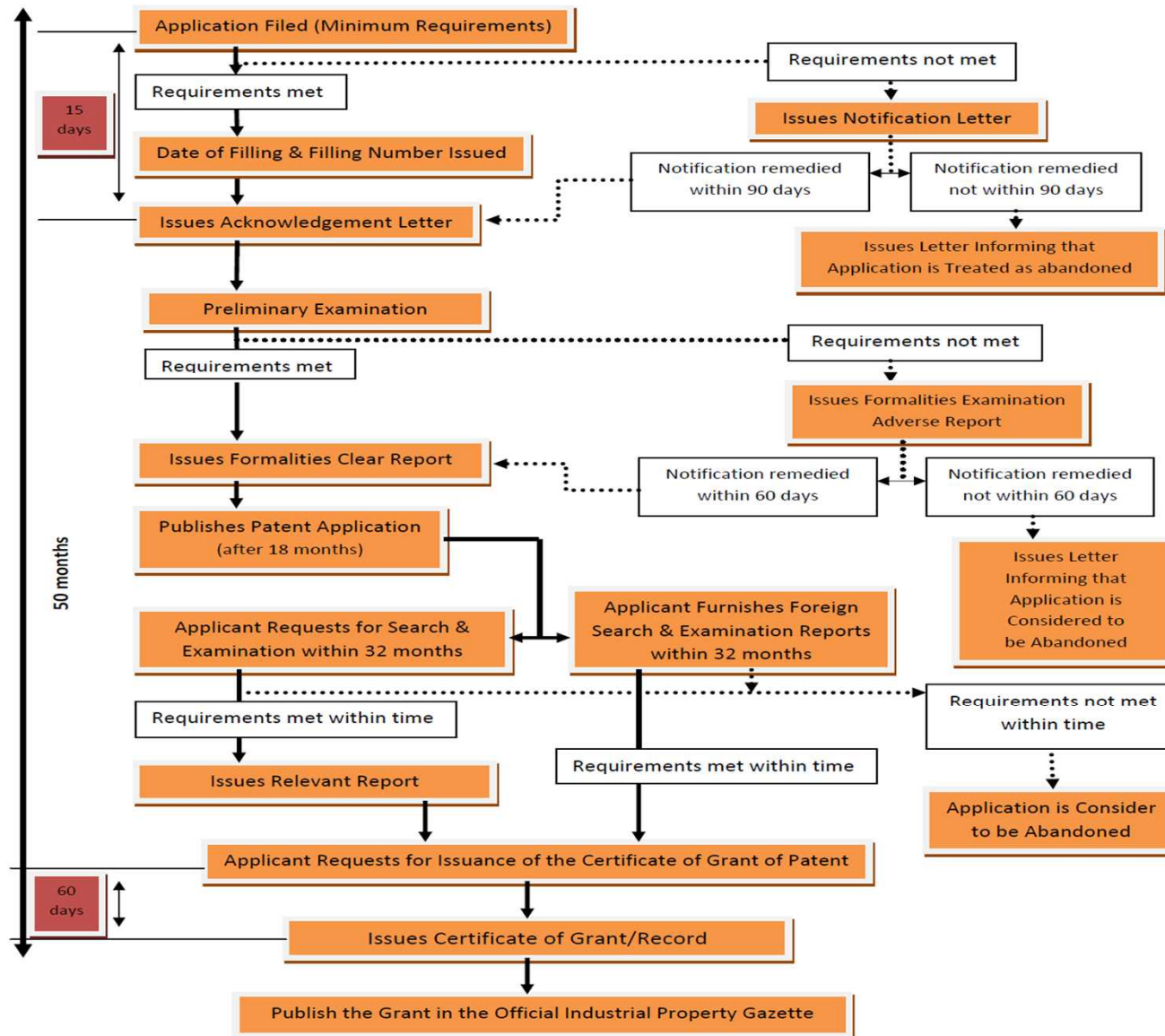
| CLAIMING                                | APPLICATION |
|---|-------------|
| PCT                                     | 130         |
| Paris<br>Convention                     | 153         |
| Not Claiming<br>any Priority<br>(Local) | 8           |

# SOME WEBSITE FOR SEARCHING PRIOR ART

---

- <http://www.espacenet.com>
- <http://www.ipdl.inpit.go.jp>
- <http://www.epo.org>
- <http://www.uspto.gov/patft>
- <http://www.google.com/patents>
- etc.

# PATENT GRANTING PROCEDURE





# CHALLENGES

---

- Lack of Financial Resource.
- Lack of human Resource.
- Less knowledge on legal framework.
- Limited Public Awareness.
- Computerizing.

---

**THANK YOU**  
**for attention!**



Department of Intellectual Property  
Ministry of Science and Technology,  
P. O. Box: 2279  
Nahaidyo Street, Vientiane , Lao PDR.  
Tel: 856-21- 240784  
Fax: 856-21-213472