



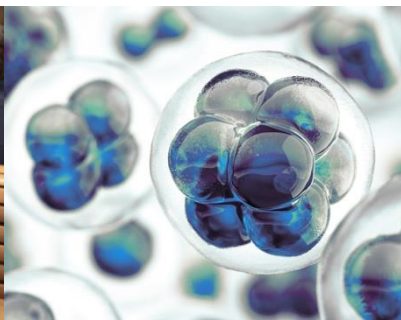
Europäisches
Patentamt

European
Patent Office

Office européen
des brevets

EPO Mailbox API

WIPO API Day



Theodor Paleolog, Head of department Back Office Tools

EPO Business Information Technology
WIPO FOR OFFICIAL USE ONLY

June 13th 2023

New B2B API services for MyEPO

- The European Patent Office has launched MyEPO, a new platform for electronic services, including Online Filing 2.0 and MyEPO Portfolio.
- Our aim is to develop new B2B APIs that complement MyEPO browser-based applications.
- Scope of the first B2B service : **EPO Mailbox API**
- Mid-term goal : Provide further API services in line with user priorities, including the functionality that will replace the current OLF PMS Gateway (e.g. filing).

Some guiding principles

- MyEPO API services are built with a strong user and vendor feedback
 - *A call for interest has been launched earlier this year, involving vendors*
 - *The Mailbox API is launched in the context of the Phase 2 of MyEPO Pilot*

- The EPO Mailbox API is consistent with the functionality offered by the MyEPO Portfolio browser-based Mailbox application
 - *Consistency of functional features (read / unread, handled)*
 - *Traceability (activity log)*
 - *Users can complementarily use the web app and the API channel*

Some guiding principles

- A “state of the art” cloud native architecture is built to support the new EPO API services
 - *Third party market leader authentication provider (Okta)*
 - *API management solution to cover the entire API lifecycle*
 - *...*

- Alignment with ST90 (WIPO)
 - *Standard approach to processing and exchanging intellectual property data through APIs, with useful technical guidelines for RESTFUL API services.*
 - *Tangible benefits for the users and for the software delivery process*

Scope of the first API: EPO Mailbox

- The EPO Mailbox API allows MyEPO Portfolio users to integrate their IP management systems with EPO systems in order to :
 - *Download a list of incoming EPO communications from their EPO Mailbox and associated meta data.*
 - *Download each communication one by one (and optionally set it as “handled”).*
 - *Mark a list of communications as handled.*

EPO Mailbox API functionality

- Get a list of unhandled communications from mailbox

GET /latest/communications/unhandled Get a list of unhandled communications from mailbox.

Parameters

Name	Description
fields string (query)	Fields to retrieve in the response in the format: field1, field2 <input type="text" value="fields"/>
page integer (query)	Zero-based page index (0..N) <input type="text" value="0"/>
size integer (query)	The size of the page to be returned <input type="text" value="20"/>
sort array[string] (query)	Sorting criteria in the format: property,(asc desc). Default sort order is ascending. Multiple sort criteria are supported. <input type="button" value="Add string item"/>

EPO Mailbox API functionality: metadata

Request URL

```
https://api-osa.apps-staging.epo.org/latest/communications/unhandled?page=0&size=20
```

Server response

Code Details

200

Response body

```
{
  "content": [
    {
      "id": "1e2zwcml1uu2922",
      "applicantName": null,
      "title": "Communication regarding possible amendment of the application/payment of claims fee",
      "dispatchDate": "2023-02-15",
      "applicationNumber": "EP 20 842 543",
      "userReference": "EP102394",
      "document": "https://api-osa.apps-staging.epo.org/latest/communications/download/1e2zwcml1uu2922",
      "digitalFile": "https://my-o.epo.org/user-area/mailbox-osa/applications/20842543",
      "documentCode": "1226CC",
      "read": true,
      "links": [
        {
          "rel": "download",
          "href": "https://api-osa.apps-staging.epo.org/latest/communications/download/1e2zwcml1uu2922?markAsHandled=false",
          "title": "Download communication",
          "type": "GET"
        },
        {
          "rel": "handle",
          "href": "https://api-osa.apps-staging.epo.org/latest/communications/handle",
          "media": "application/json",
          "title": "Handle communication",
          "type": "POST"
        }
      ]
    }
  ]
}
```



Download

Response headers

```
cache-control: no-cache,no-store,max-age=0,must-revalidate
content-type: application/json
correlation-id: 646b16cfc2204629a9556500ed6f068a
date: Mon, 22 May 2023 07:16:33 GMT
expires: 0
```

EPO Mailbox API functionality

■ Download single communication file

GET /latest/communications/download/{id} Download single communication file.

Parameters Try it out

Name	Description
id * required string (path)	The id of the communication
markAsHandled boolean (query)	Flag to request communication to be marked as handled automatically

■ Mark communication as handled

POST /latest/communications/handle Mark communications as handled.

Parameters Try it out

No parameters

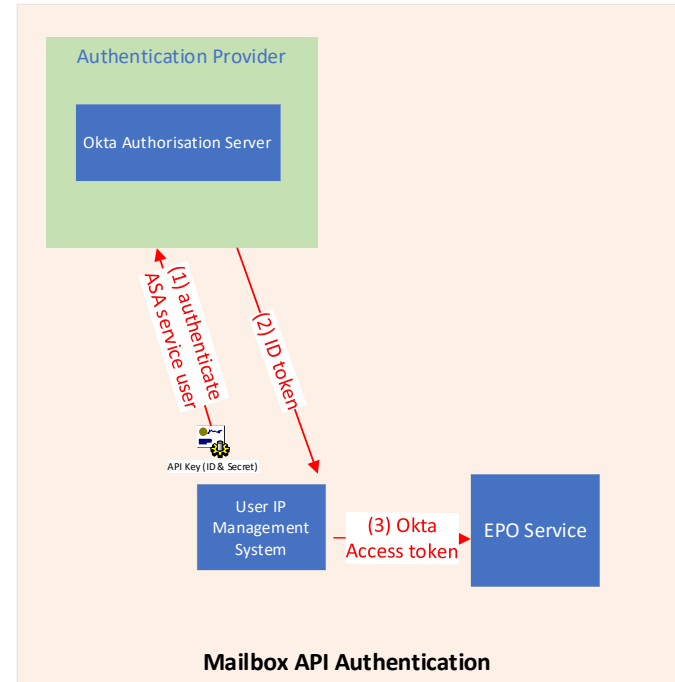
Request body * required application/json

Example Value | Schema

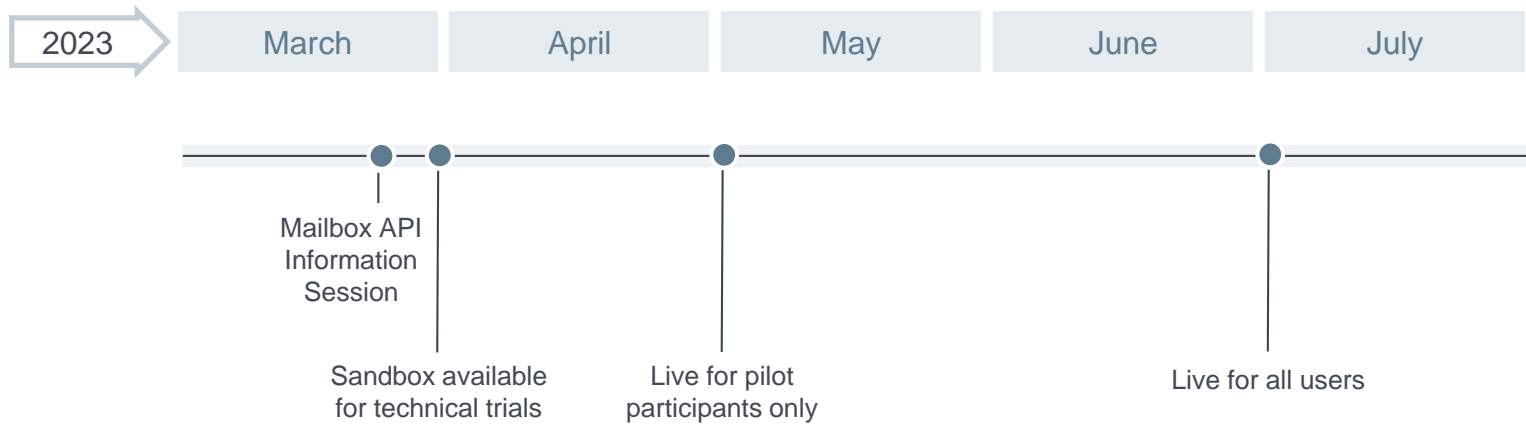
```
{
  "communicationIds": [
    "string"
  ]
}
```


Authentication mechanisms

- Authentication mechanisms rely on the same software used by other EPO online services (Okta)
- Upon completion of the registration process, specific credentials are provided for each “**system account**”
- The system account can be viewed in the MyEPO Portfolio administration screens, among all user accounts within a company.
- Authentication to EPO services require an access token generated by Okta.



EPO Mailbox API timeline



Thank you

for more information about the EPO Mailbox API :

<https://www.epo.org/applying/online-services/improving/myepo-portfolio-api.html>