

# Evaluation of WIPO's Partnerships

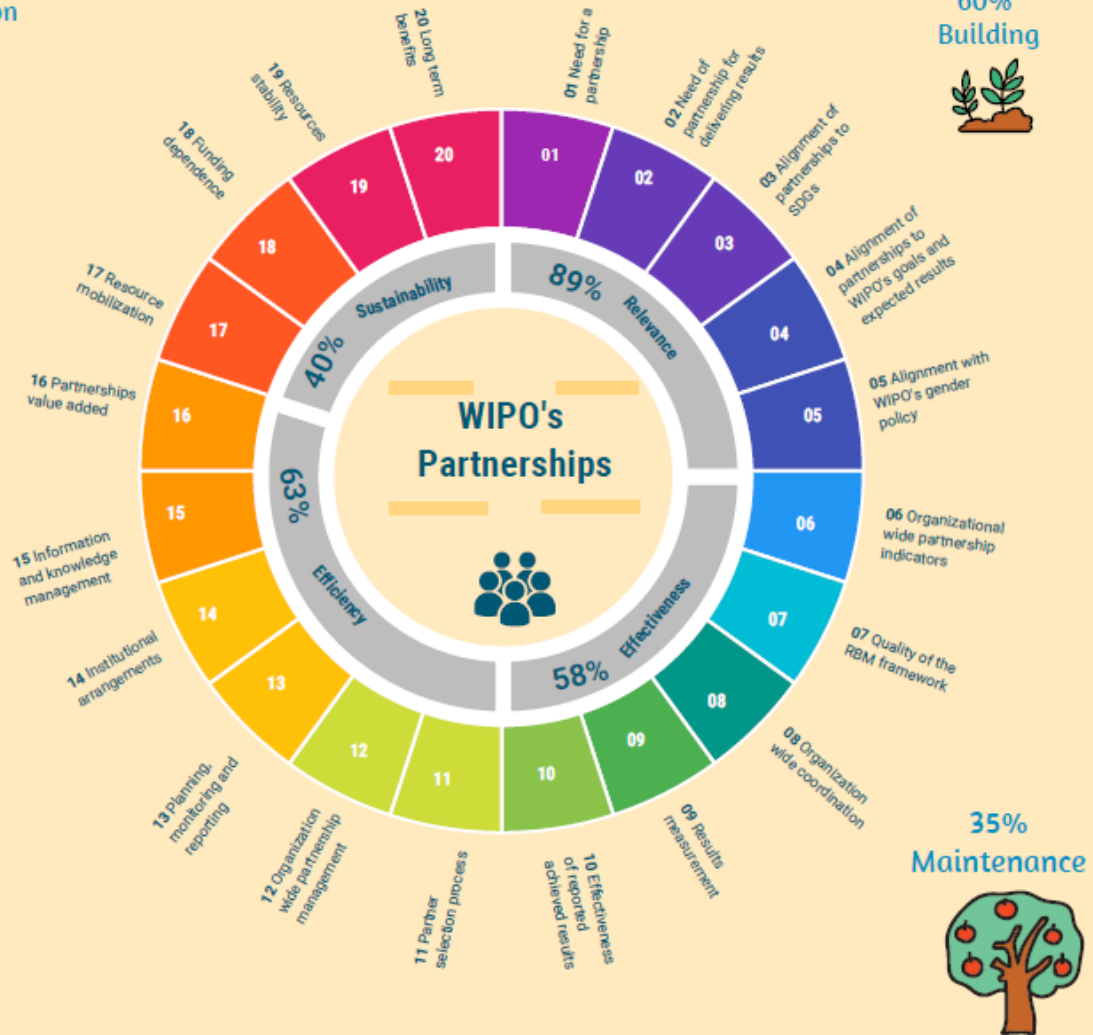
  
24 external stakeholders

  
71 WIPO staff consulted

In depth analysis of 81 partnerships  
Data base with 1,587 partnerships

Period: September to November 2018  
Scope: 2015-2017  
December 20, 2018  
Evaluation Section  
WIPO Internal Oversight Division

5%  
**Formation**



Recommendation 1 (a): The Sectors/Programs listed in the matrix at Annex V should put in place clear and realistic purpose, clear partnership arrangements including MoUs, contractual agreement and learning, monitoring and knowledge sharing of partnerships to meet their programs' needs.

Recommendation 1 (b): The Sectors/Programs with partnership responsibilities listed in Annex V should use the Enterprise Content Management (ECM) system, to foster learning and knowledge sharing by populating it with partnerships agreements and related documentation such as plans, Memoranda of Understandings, reports, performance data, realized benefits, and lessons learned.